

# Harris Central Appraisal District

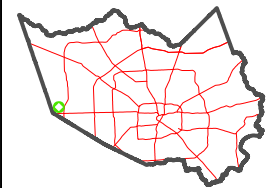


0 45 90 180 Feet

PUBLICATION DATE:  
5/30/2024

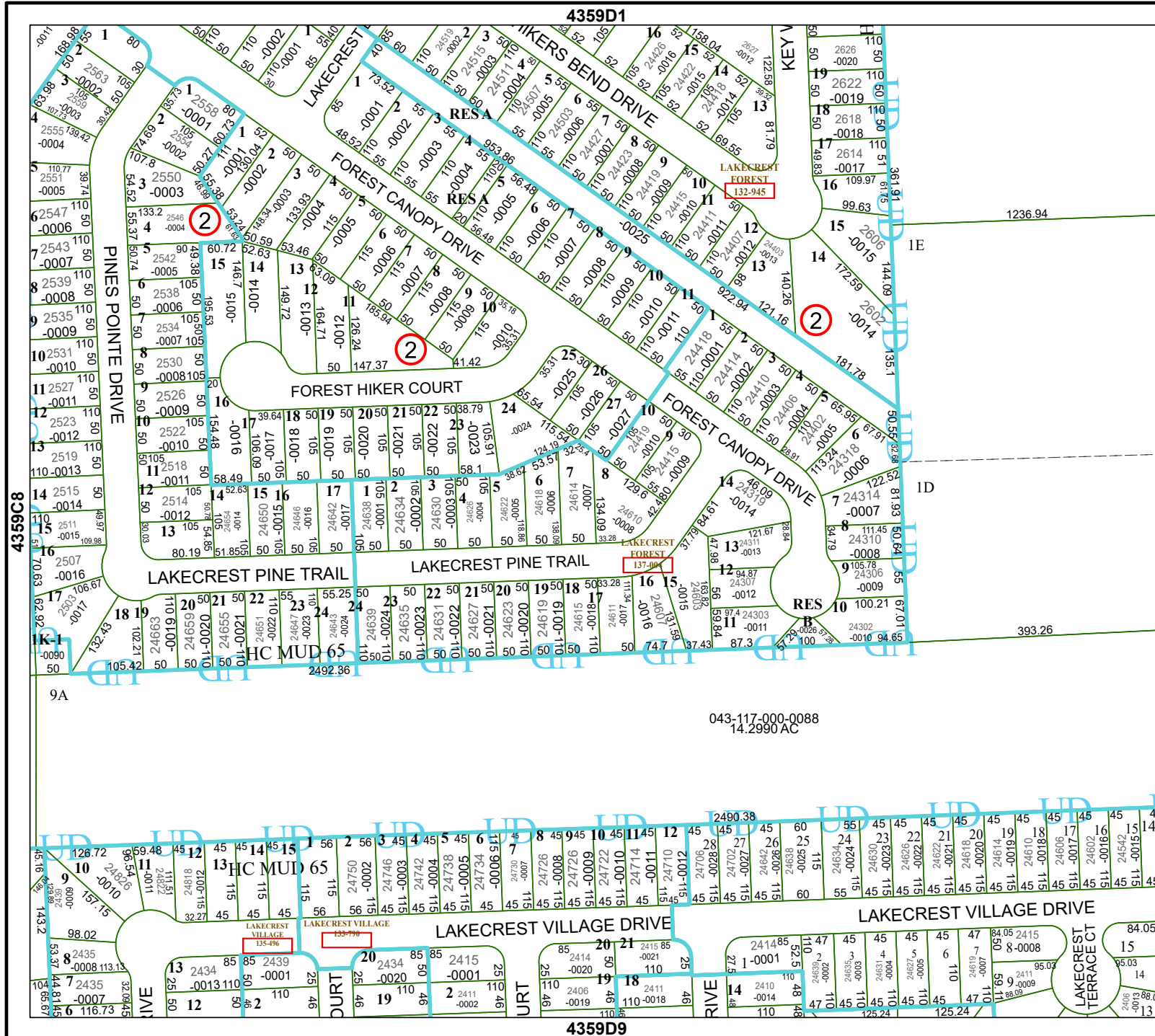
Geospatial or map data maintained by the Harris Central Appraisal District is for informational purposes and may not have been prepared for or be suitable for legal, engineering, or surveying purposes. It does not represent an on-the-ground survey and only represents the approximate location of property boundaries.

MAP LOCATION



## FACET 4359D5

3	4	1	2	3
7	8	5	6	7
11	12	9	10	11



043-117-000-0088  
14.2990 AC

4359D9