

4360D8

4360D11

4359B4

23625
043-105-000-0006
1.0000 AC
043-105-000-0025
10.0430 AC

043-105-000-0061
13.0430 AC

RES A
HARRIS COUNTY MUD NO
449 WATER PLANT NO 2
141-913

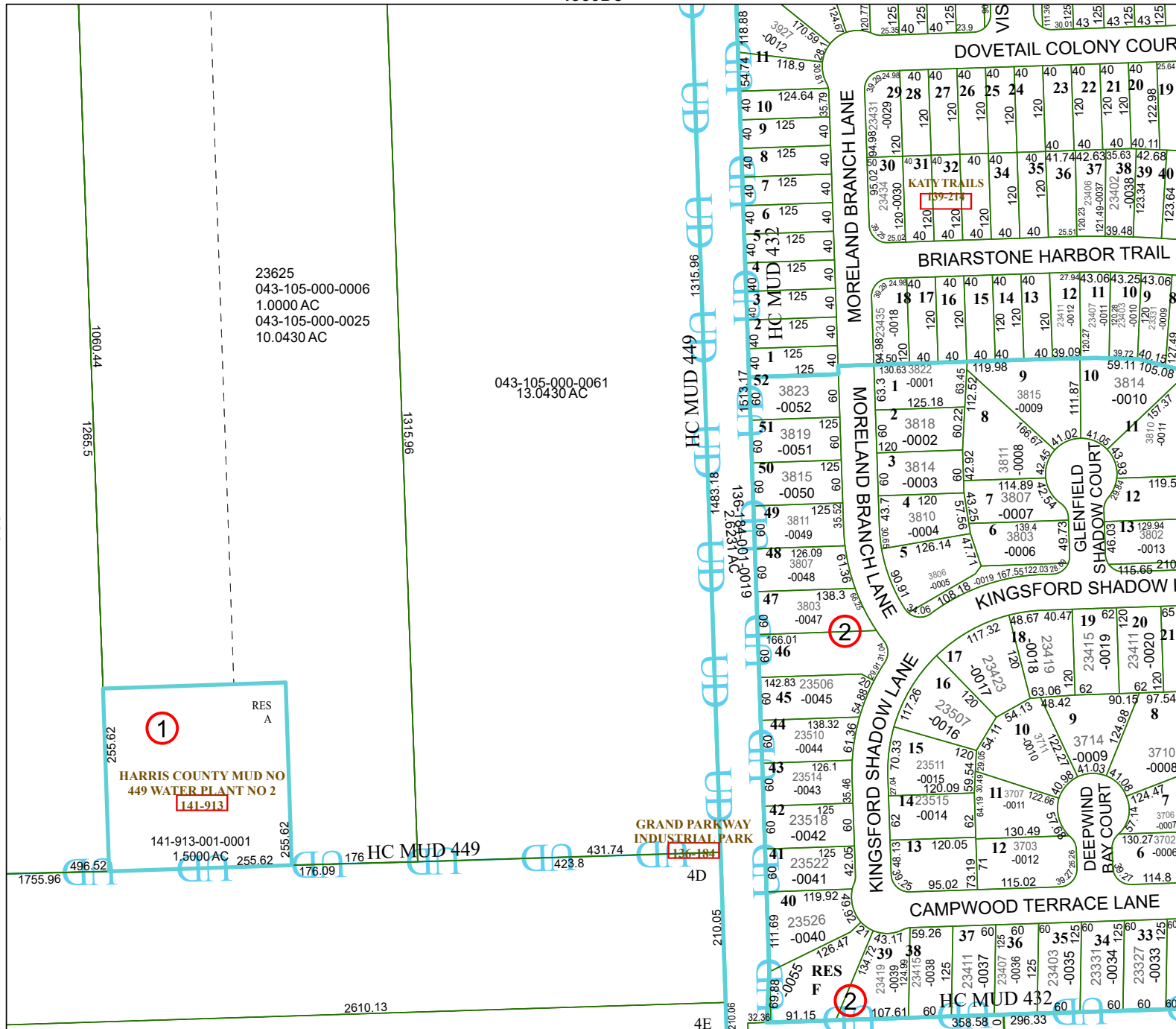
141-913-001-0001
1.5000 AC

GRAND PARKWAY
INDUSTRIAL PARK
117-184

176 HC MUD 449

4D

4E



Harris Central Appraisal District

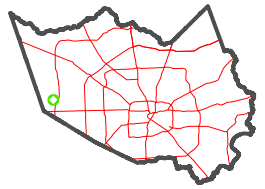


0 45 90 180 Feet

PUBLICATION DATE:
12/30/2023

Geospatial or map data maintained by the Harris Central Appraisal District is for informational purposes and may not have been prepared for or be suitable for legal, engineering, or surveying purposes. It does not represent an on-the-ground survey and only represents the approximate location of property boundaries.

MAP LOCATION



FACET 4360D12

6	7	8	5	6
10	11	12	9	10
2	3	4	1	2