

Harris Central Appraisal District

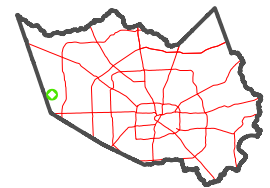


0 45 90 180 Feet

PUBLICATION DATE:
1/5/2023

Geospatial or map data maintained by the Harris Central Appraisal District is for informational purposes and may not have been prepared for or be suitable for legal, engineering, or surveying purposes. It does not represent an on-the-ground survey and only represents the approximate location of property boundaries.

MAP LOCATION

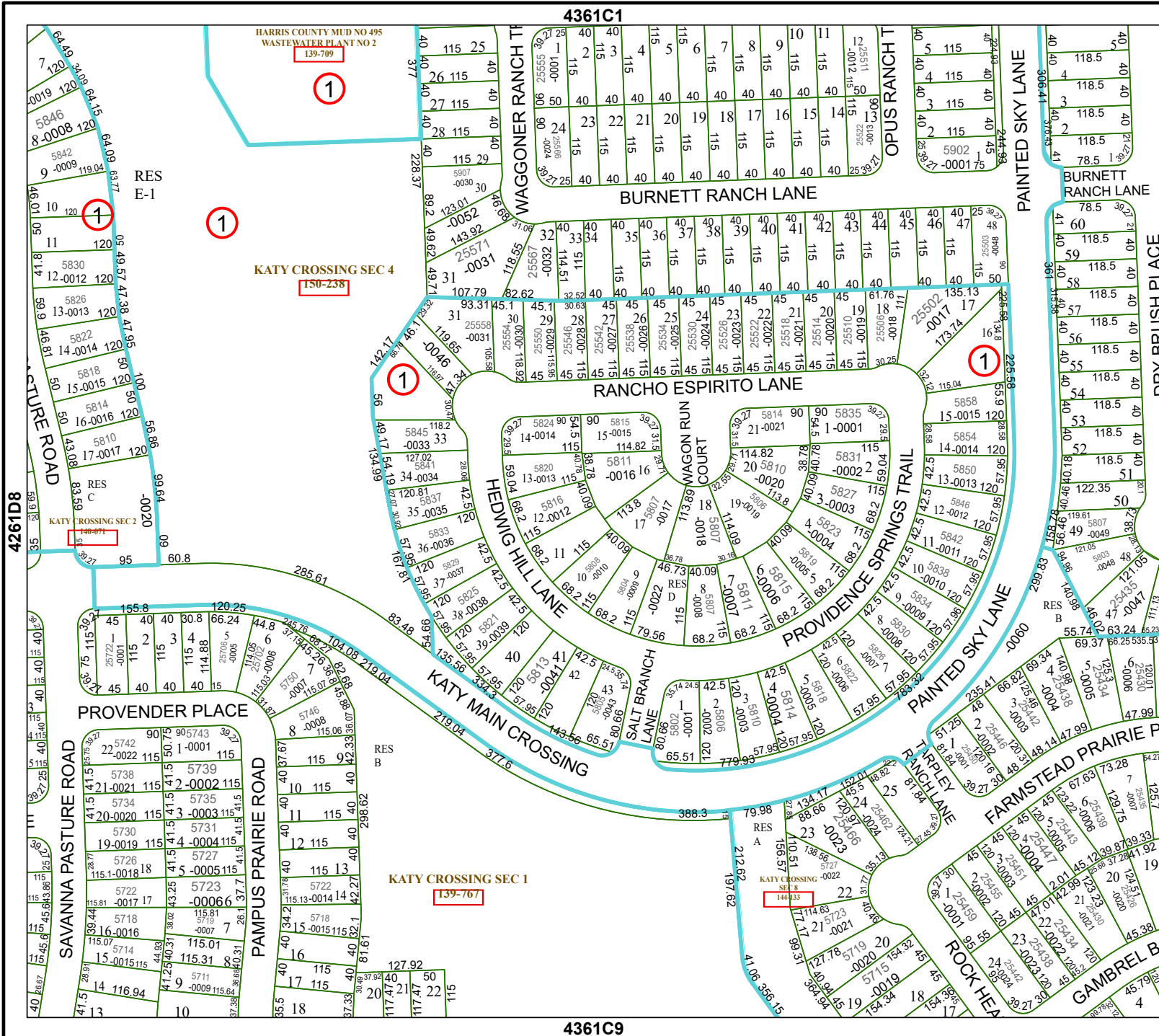


FACET 4361C5

3	4	1	2	3
7	8	5	6	7
11	12	9	10	11

4361C1

4361C9



HARRIS COUNTY MUD NO 495
WASTEWATER PLANT NO 2
139-709

KATY CROSSING SEC 4
150-238

KATY CROSSING SEC 1
139-767

KATY CROSSING SEC 8
144-433

4261D8

4361C6