

4362B8

Harris Central Appraisal District



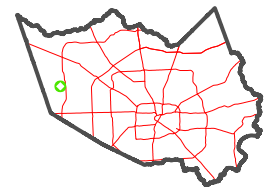
0 45 90 180 Feet

PUBLICATION DATE:
3/13/2023

Geospatial or map data maintained by the Harris Central Appraisal District is for informational purposes and may **not** have been prepared for or be suitable for legal, engineering, or surveying purposes. It does **not** represent an on-the-ground survey and only represents the approximate location of property boundaries.



MAP LOCATION



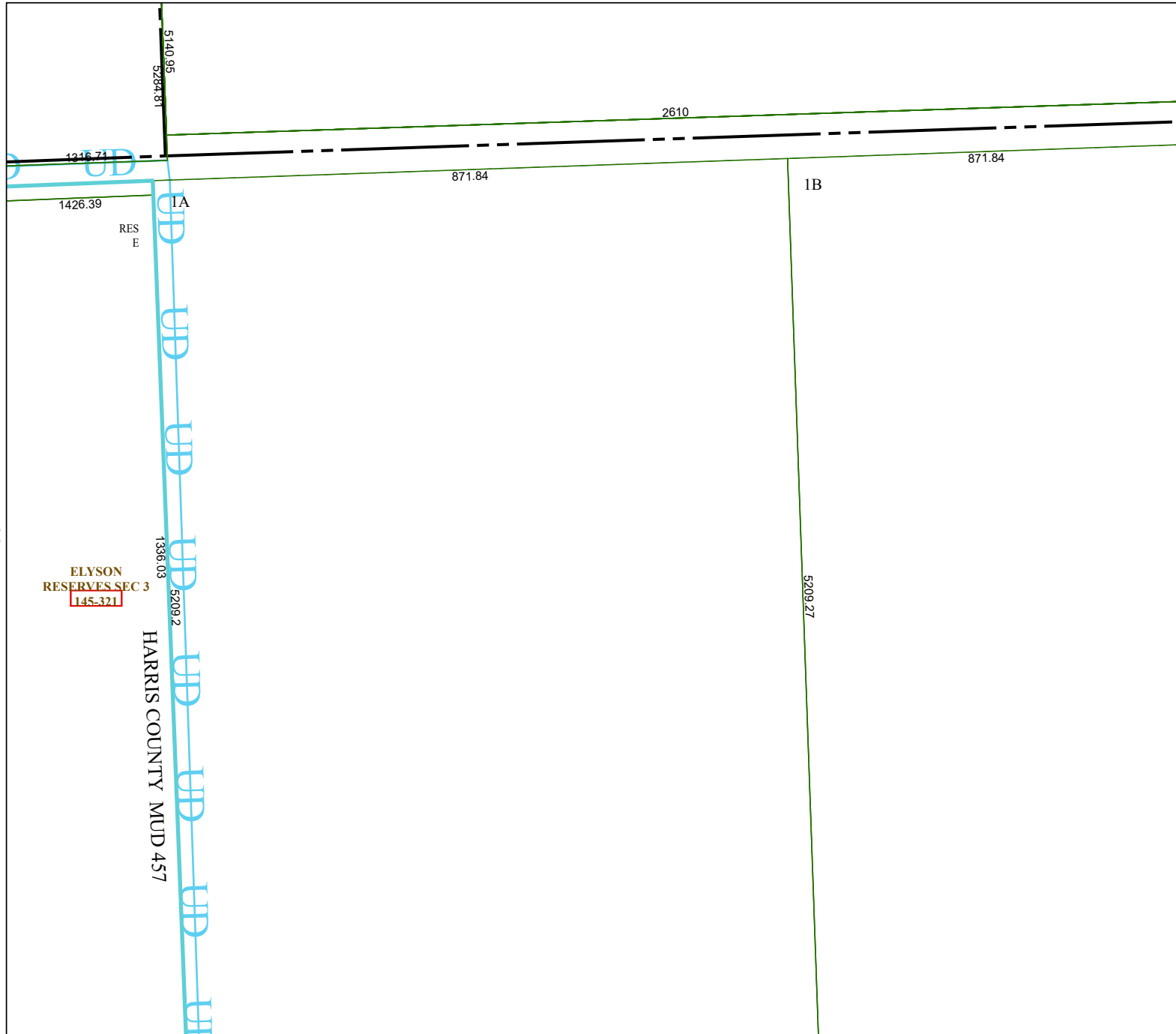
FACET 4362B12

6	7	8	5	6
10	11	12	9	10
2	3	4	1	2

4362D4

4362B11

4462A



RES
E

HARRIS COUNTY MUD 457

ELYSON
RESERVES SEC 3
145-321

1336.03

5209.2

1426.39

IA

871.84

IB

871.84

2610

5140.95
5284.81

1316.71