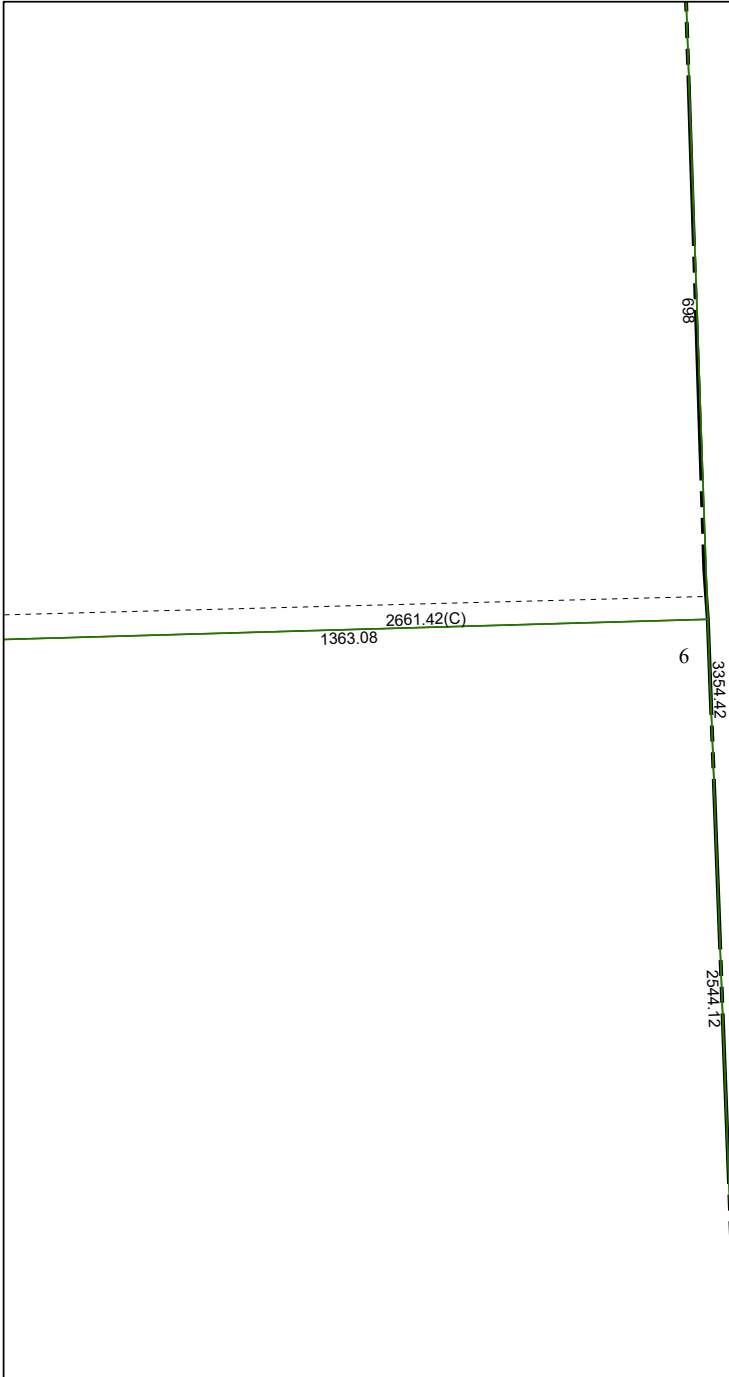


4363D10

4362B1



698

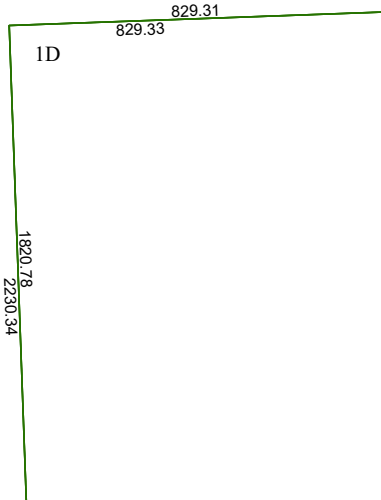
1363.08 2661.42(C)

6

3854.42

2544.12

4362B6



829.31

ID

1820.78
2230.34

Harris Central Appraisal District



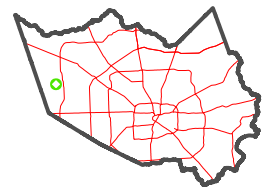
0 45 90 180 Feet

PUBLICATION DATE:
12/30/2023

Geospatial or map data maintained by the Harris Central Appraisal District is for informational purposes and may **not** have been prepared for or be suitable for legal, engineering, or surveying purposes. It does **not** represent an on-the-ground survey and only represents the approximate location of property boundaries.



MAP LOCATION



FACET 4362B2

12	9	10	11	12
4	1	2	3	4
8	5	6	7	8