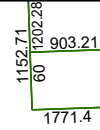


4363A1

4263B8



# Harris Central Appraisal District



0 45 90 180  
Feet

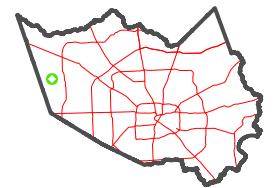
PUBLICATION DATE:  
4/22/2024

Geospatial or map data maintained by the Harris Central Appraisal District is for informational purposes and may **not** have been prepared for or be suitable for legal, engineering, or surveying purposes. It does **not** represent an on-the-ground survey and only represents the approximate location of property boundaries.



4363A6

### MAP LOCATION



## FACET 4363A5

3	4	1	2	3
7	8	5	6	7
11	12	9	10	11

4363A9