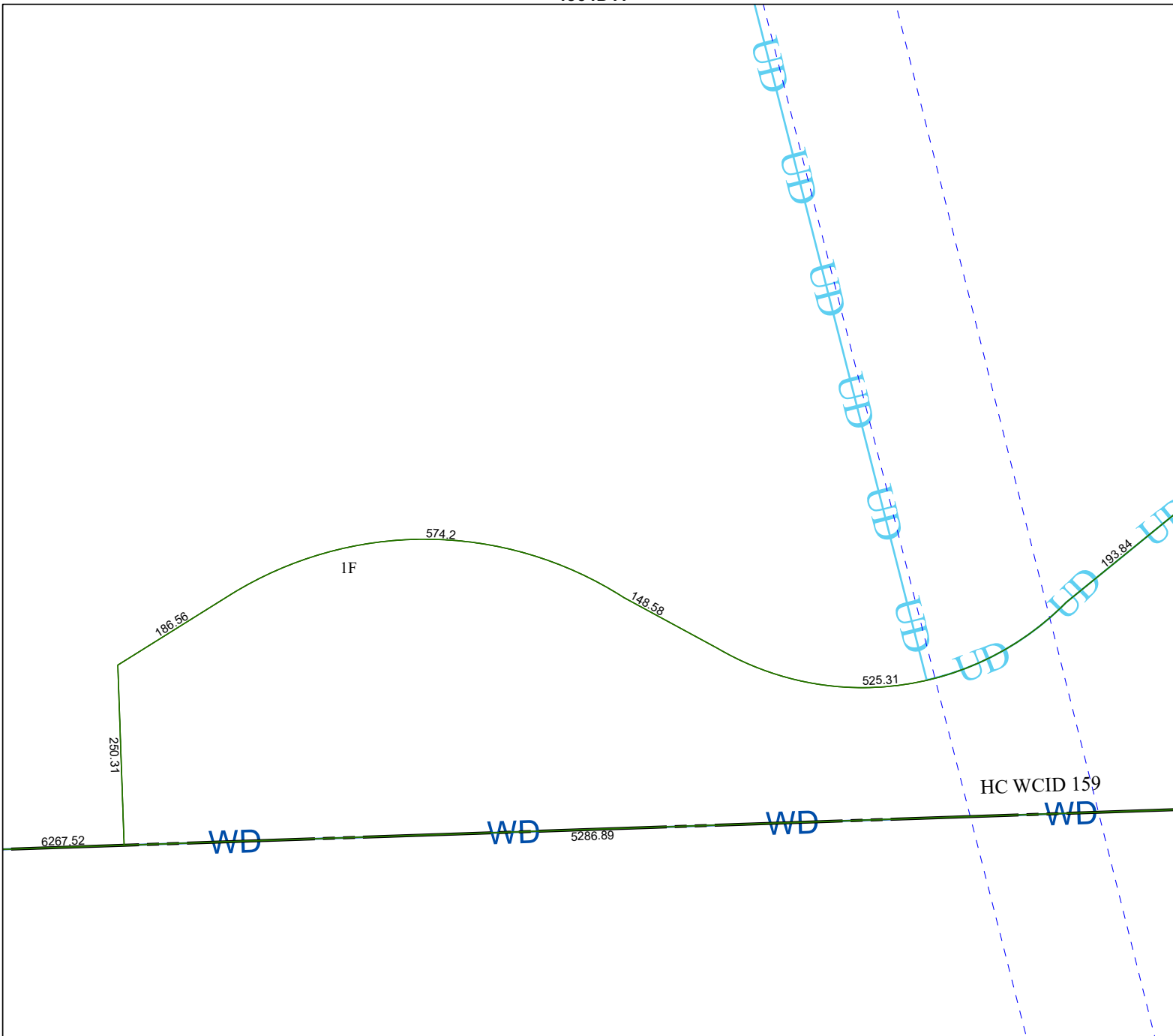


4364D11

4363B2



4363B7

# Harris Central Appraisal District



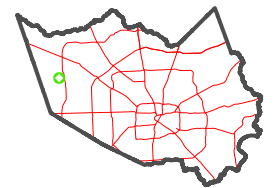
0 45 90 180  
Feet

PUBLICATION DATE:  
3/11/2024

Geospatial or map data maintained by the Harris Central Appraisal District is for informational purposes and may **not** have been prepared for or be suitable for legal, engineering, or surveying purposes. It does **not** represent an on-the-ground survey and only represents the approximate location of property boundaries.



### MAP LOCATION



## FACET

### 4363B3

9	10	11	12	9
1	2	3	4	1
5	6	7	8	5