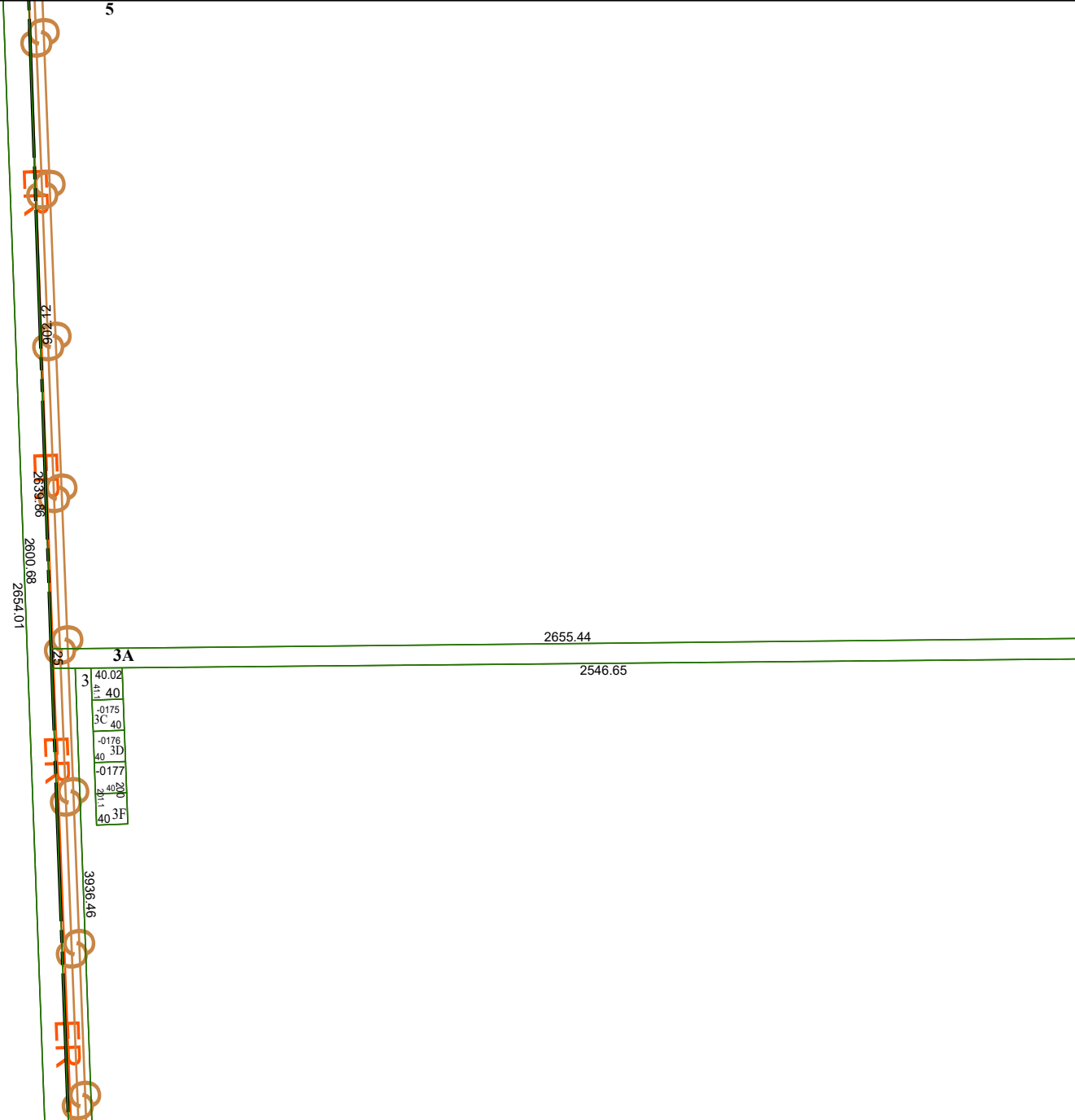


4363C7

5

4363C10



2655.44

2546.65

2654.01  
2600.68  
2633.66  
2654.01

4362A3

# Harris Central Appraisal District



0 45 90 180 Feet

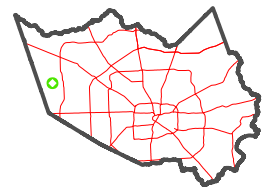
PUBLICATION DATE:  
1/23/2024

Geospatial or map data maintained by the Harris Central Appraisal District is for informational purposes and may **not** have been prepared for or be suitable for legal, engineering, or surveying purposes. It does **not** represent an on-the-ground survey and only represents the approximate location of property boundaries.



4363C12

## MAP LOCATION



## FACET 4363C11

5	6	7	8	5
9	10	11	12	9
1	2	3	4	1