

4365B11

Harris Central Appraisal District



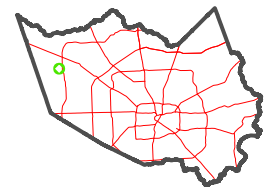
0 45 90 180 Feet

PUBLICATION DATE:
3/25/2024

Geospatial or map data maintained by the Harris Central Appraisal District is for informational purposes and may **not** have been prepared for or be suitable for legal, engineering, or surveying purposes. It does **not** represent an on-the-ground survey and only represents the approximate location of property boundaries.



MAP LOCATION



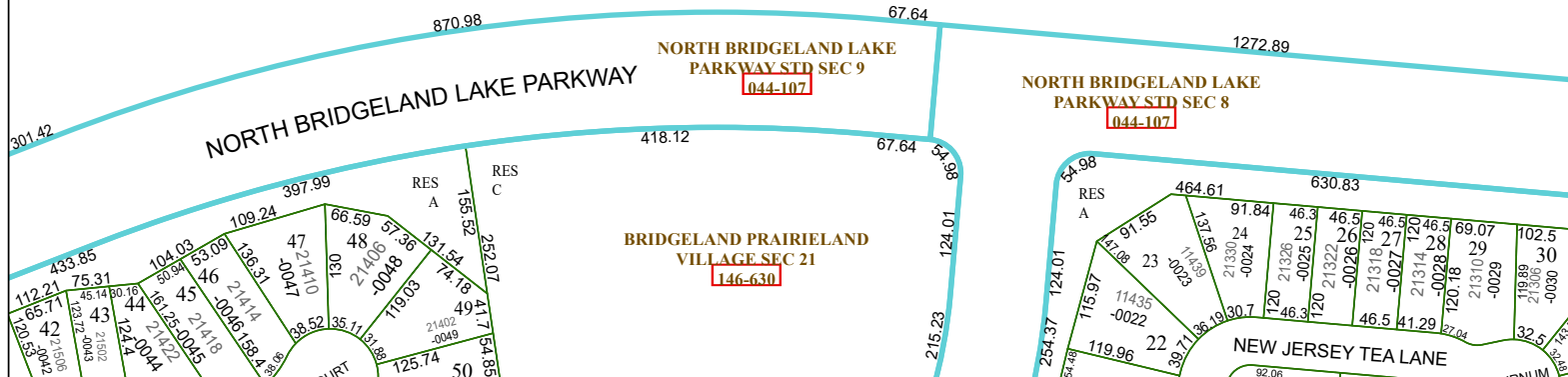
FACET 4365D3

9	10	11	12	9
1	2	3	4	1
5	6	7	8	5

4365D2

4365D4

044-107-000-0001
40.0093 AC



4365D7