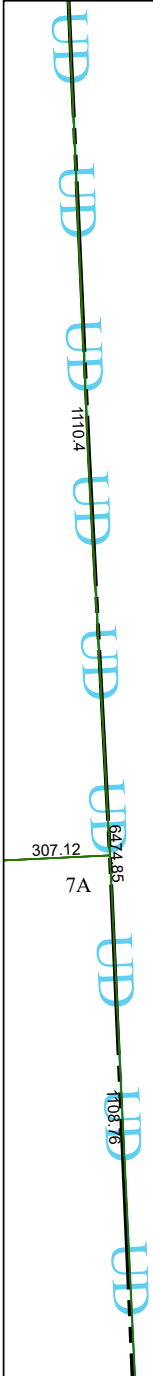


4367D11

4366B2



4366B7

# Harris Central Appraisal District



0 45 90 180  
Feet

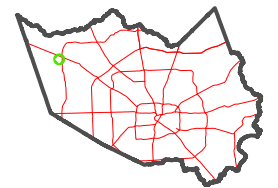
PUBLICATION DATE:  
12/30/2023

Geospatial or map data maintained by the Harris Central Appraisal District is for informational purposes and may **not** have been prepared for or be suitable for legal, engineering, or surveying purposes. It does **not** represent an on-the-ground survey and only represents the approximate location of property boundaries.



4366B4

## MAP LOCATION



## FACET 4366B3

|   |    |    |    |   |
|---|----|----|----|---|
| 9 | 10 | 11 | 12 | 9 |
| 1 | 2  | 3  | 4  | 1 |
| 5 | 6  | 7  | 8  | 5 |