

4366B1

Harris Central Appraisal District



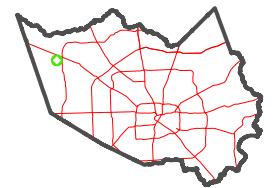
0 45 90 180 Feet

PUBLICATION DATE:
5/6/2024

Geospatial or map data maintained by the Harris Central Appraisal District is for informational purposes and may **not** have been prepared for or be suitable for legal, engineering, or surveying purposes. It does **not** represent an on-the-ground survey and only represents the approximate location of property boundaries.



MAP LOCATION



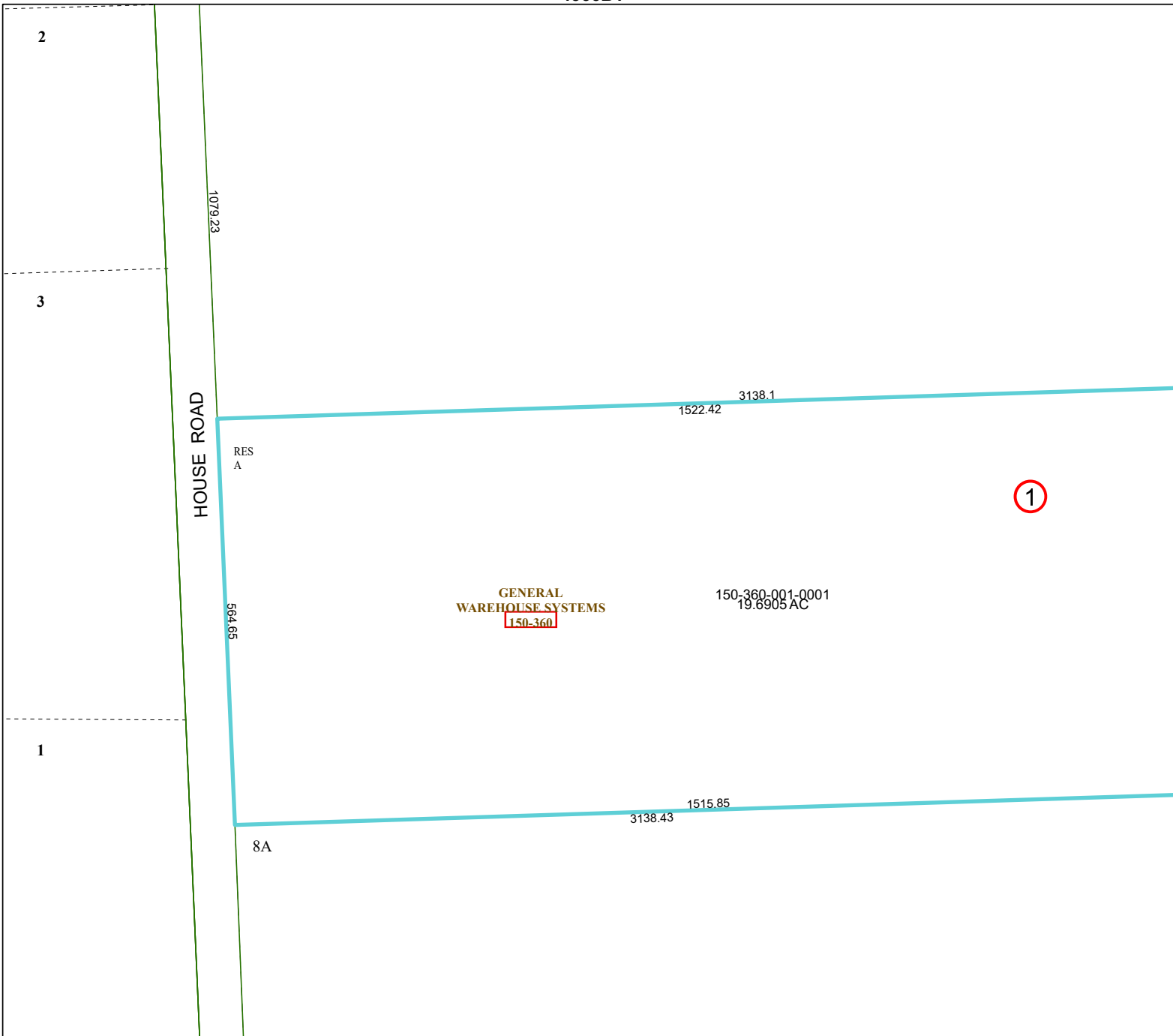
FACET 4366B5

3	4	1	2	3
7	8	5	6	7
11	12	9	10	11

4366B9

4366A8

4366B6



2

3

1

HOUSE ROAD

1079.23

RES
A

564.65

8A

GENERAL
WAREHOUSE SYSTEMS
150-360

150-360-001-0001
19.6905 AC

1522.42 3138.1

3138.43 1515.85

1