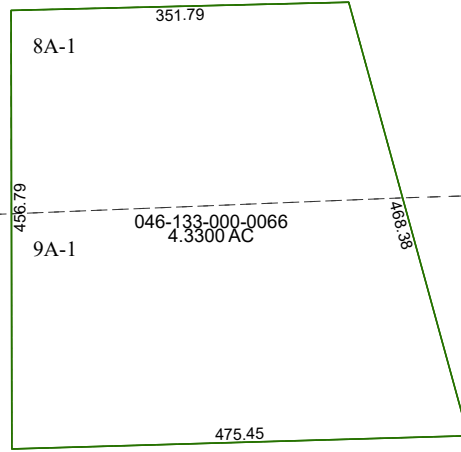


4366B5

1



9A

9A-1

4366A12

9

1390.72

3140

4366D1

# Harris Central Appraisal District



0 45 90 180  
Feet

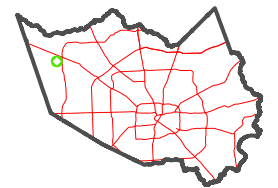
PUBLICATION DATE:  
5/6/2024

Geospatial or map data maintained by the Harris Central Appraisal District is for informational purposes and may **not** have been prepared for or be suitable for legal, engineering, or surveying purposes. It does **not** represent an on-the-ground survey and only represents the approximate location of property boundaries.



4366B10

## MAP LOCATION



# FACET

## 4366B9

7	8	5	6	7
11	12	9	10	11
3	4	1	2	3