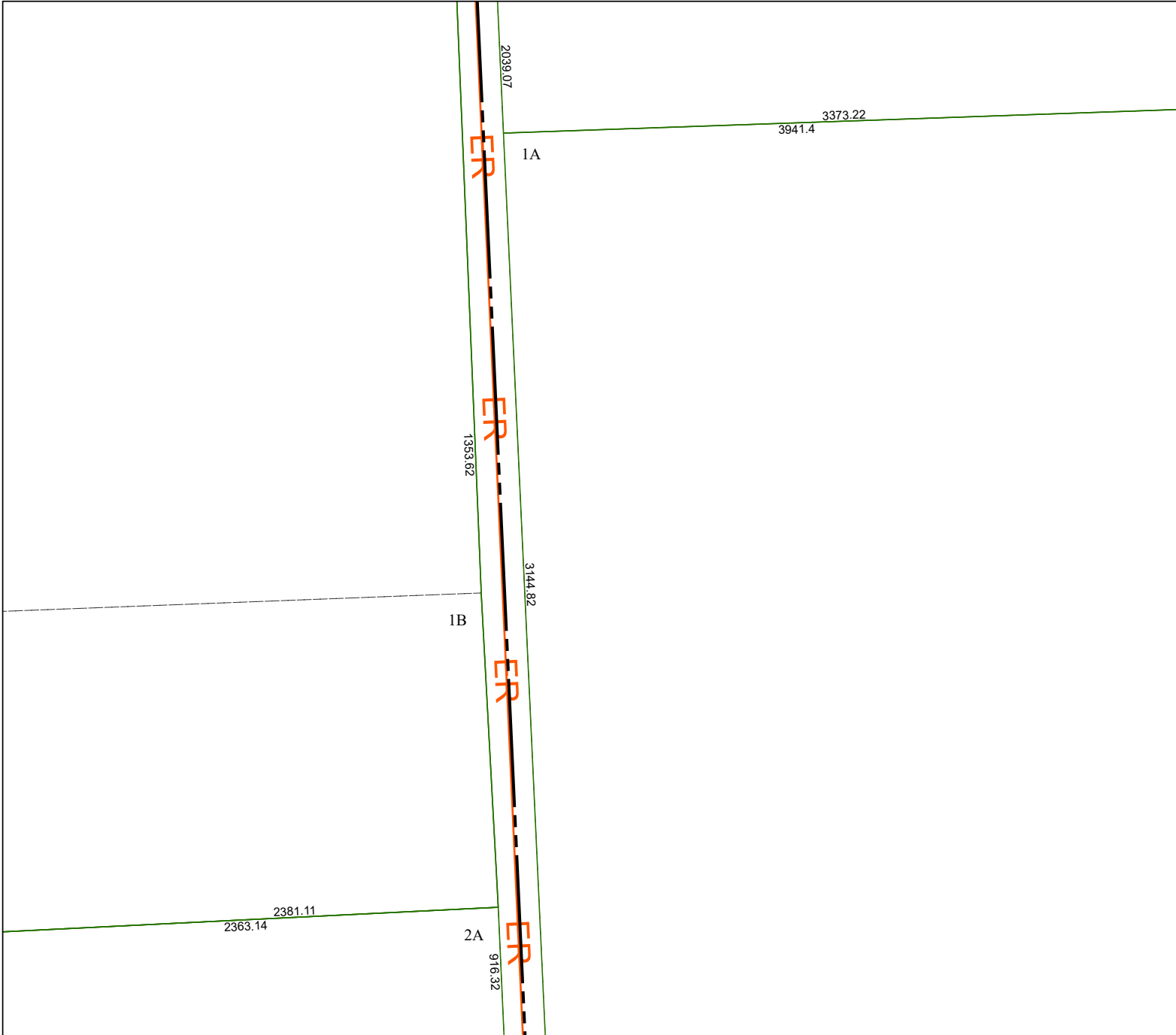


4366A10

4366C1



4366C6

# Harris Central Appraisal District



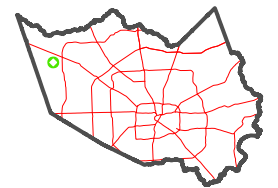
0 45 90 180 Feet

PUBLICATION DATE:  
1/9/2025

Geospatial or map data maintained by the Harris Central Appraisal District is for informational purposes and may **not** have been prepared for or be suitable for legal, engineering, or surveying purposes. It does **not** represent an on-the-ground survey and only represents the approximate location of property boundaries.



## MAP LOCATION



# FACET

4366C2

12	9	10	11	12
4	1	2	3	4
8	5	6	7	8

4366C3