

# Harris Central Appraisal District

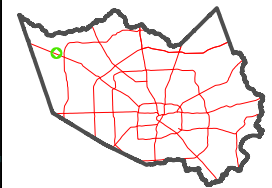


0 45 90 180 Feet

PUBLICATION DATE:  
2/17/2025

Geospatial or map data maintained by the Harris Central Appraisal District is for informational purposes and may not be suitable for legal, engineering, or surveying purposes. It does not represent an on-the-ground survey and only represents the approximate location of property boundaries.

MAP LOCATION

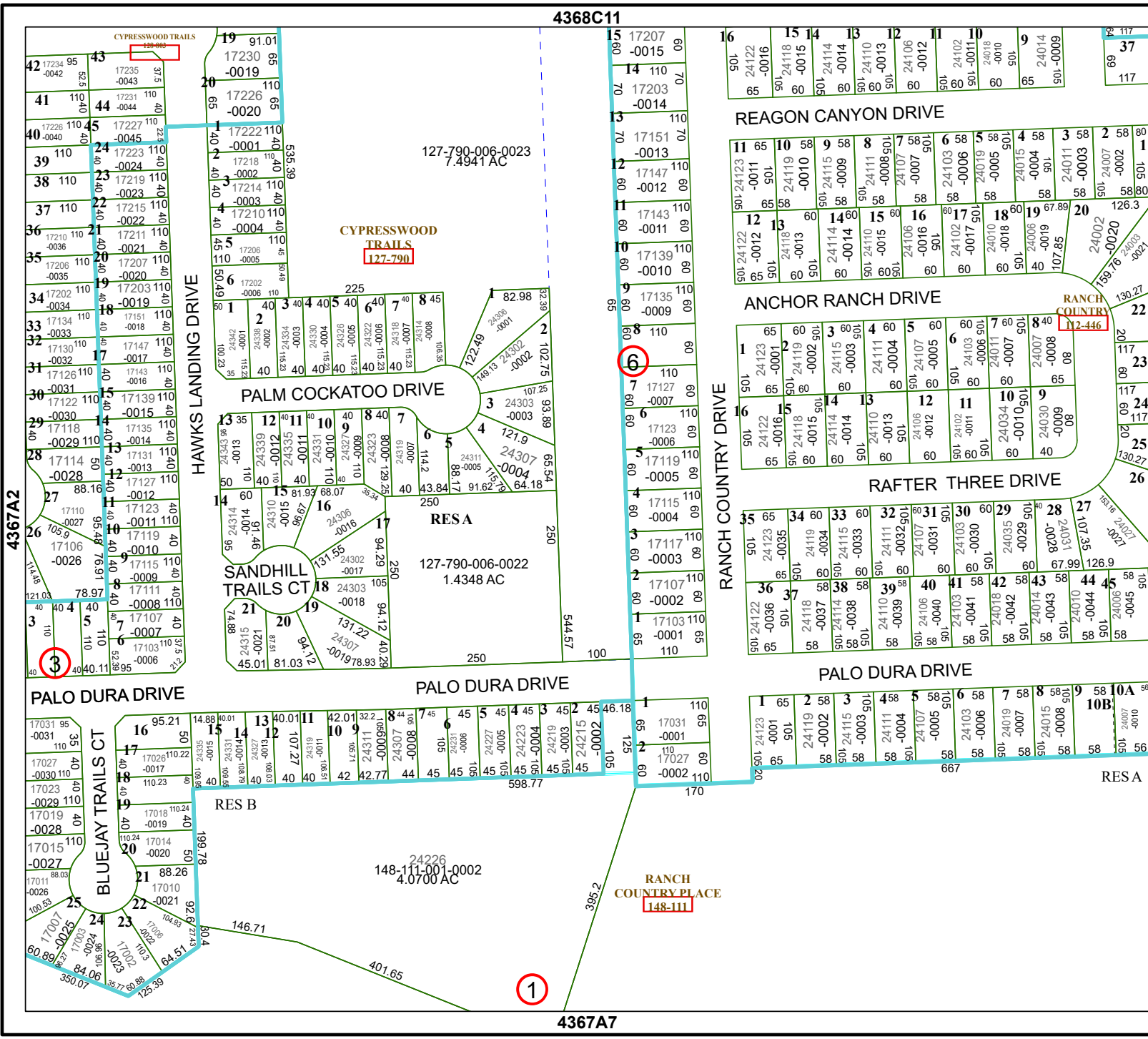


## FACET 4367A3

9	10	11	12	9
1	2	3	4	1
5	6	7	8	5

4368C11

4367A7



4367A2

4367A4

