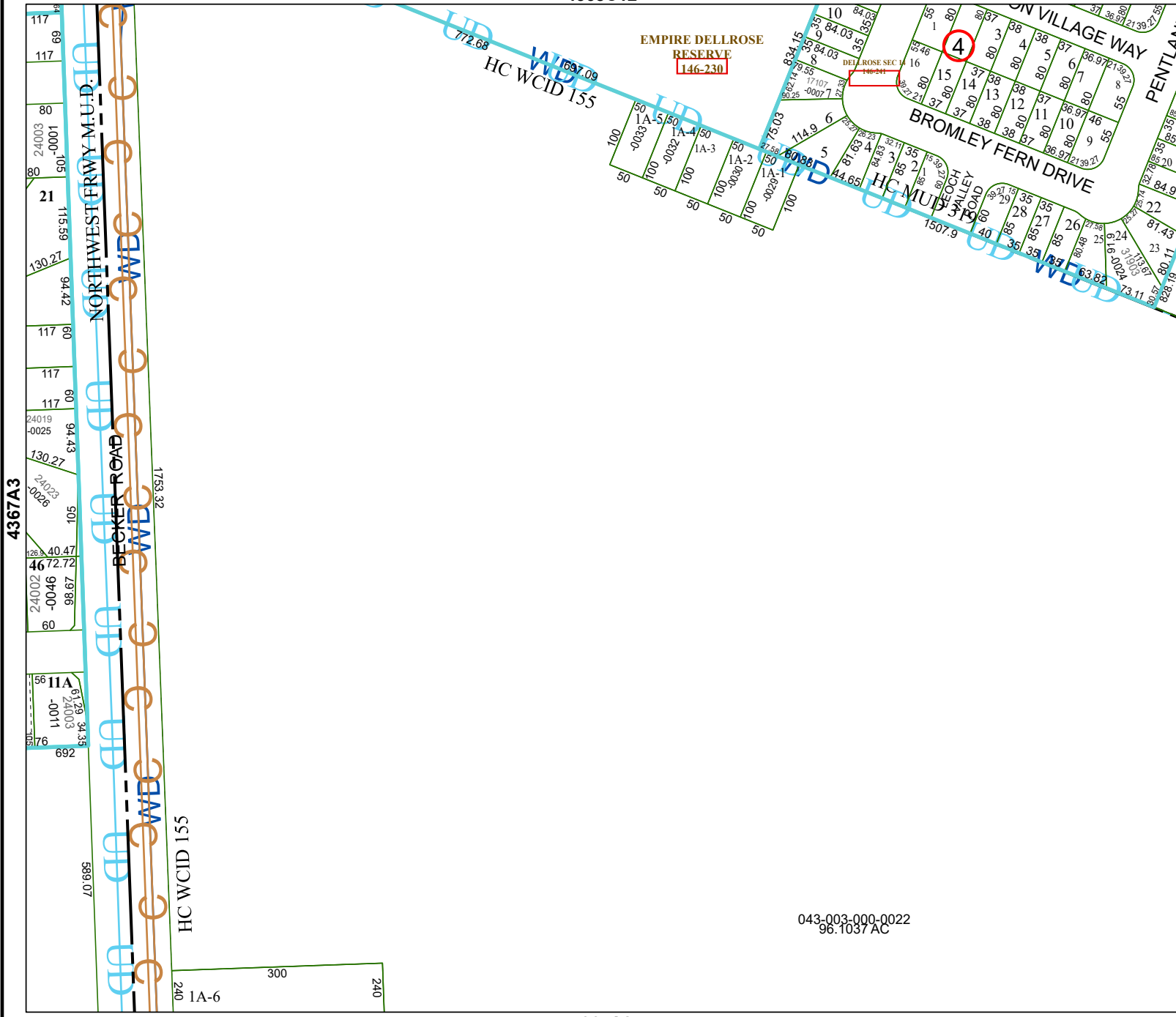


4368C12



Harris Central Appraisal District



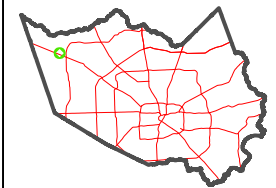
0 45 90 180 Feet

PUBLICATION DATE:
3/25/2024

Geospatial or map data maintained by the Harris Central Appraisal District is for informational purposes and may not have been prepared for or be suitable for legal, engineering, or surveying purposes. It does not represent an on-the-ground survey and only represents the approximate location of property boundaries.



MAP LOCATION



FACET

4367A4

10	11	12	9	10
2	3	4	1	2
6	7	8	5	6

043-003-000-0022
96.1037 AC

4367A8

4367A3

4367B1