

# Harris Central Appraisal District

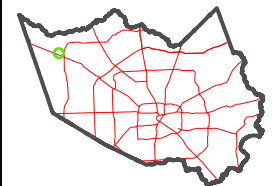


0 45 90 180 Feet

PUBLICATION DATE:  
3/25/2024

Geospatial or map data maintained by the Harris Central Appraisal District is for informational purposes and may not have been prepared for or be suitable for legal, engineering, or surveying purposes. It does not represent an on-the-ground survey and only represents the approximate location of property boundaries.

MAP LOCATION

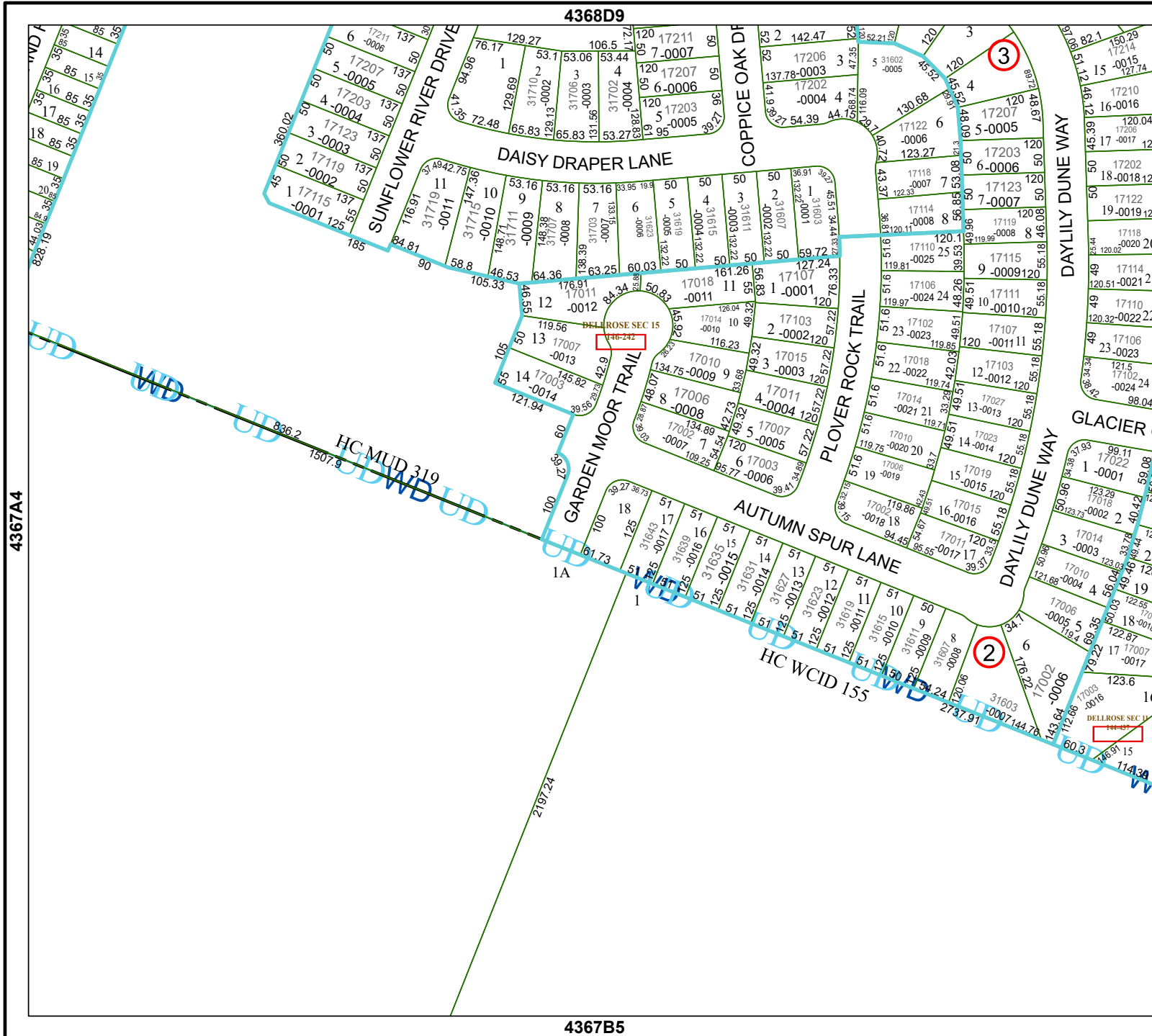


## FACET 4367B1

11	12	9	10	11
3	4	1	2	3
7	8	5	6	7

4368D9

4367B5



4367A4

4367B2