

4367C1

Harris Central Appraisal District



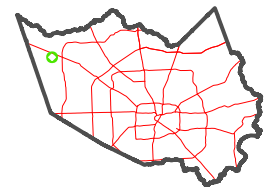
0 45 90 180 Feet

PUBLICATION DATE:
5/11/2023

Geospatial or map data maintained by the Harris Central Appraisal District is for informational purposes and may not have been prepared for or be suitable for legal, engineering, or surveying purposes. It does not represent an on-the-ground survey and only represents the approximate location of property boundaries.



MAP LOCATION



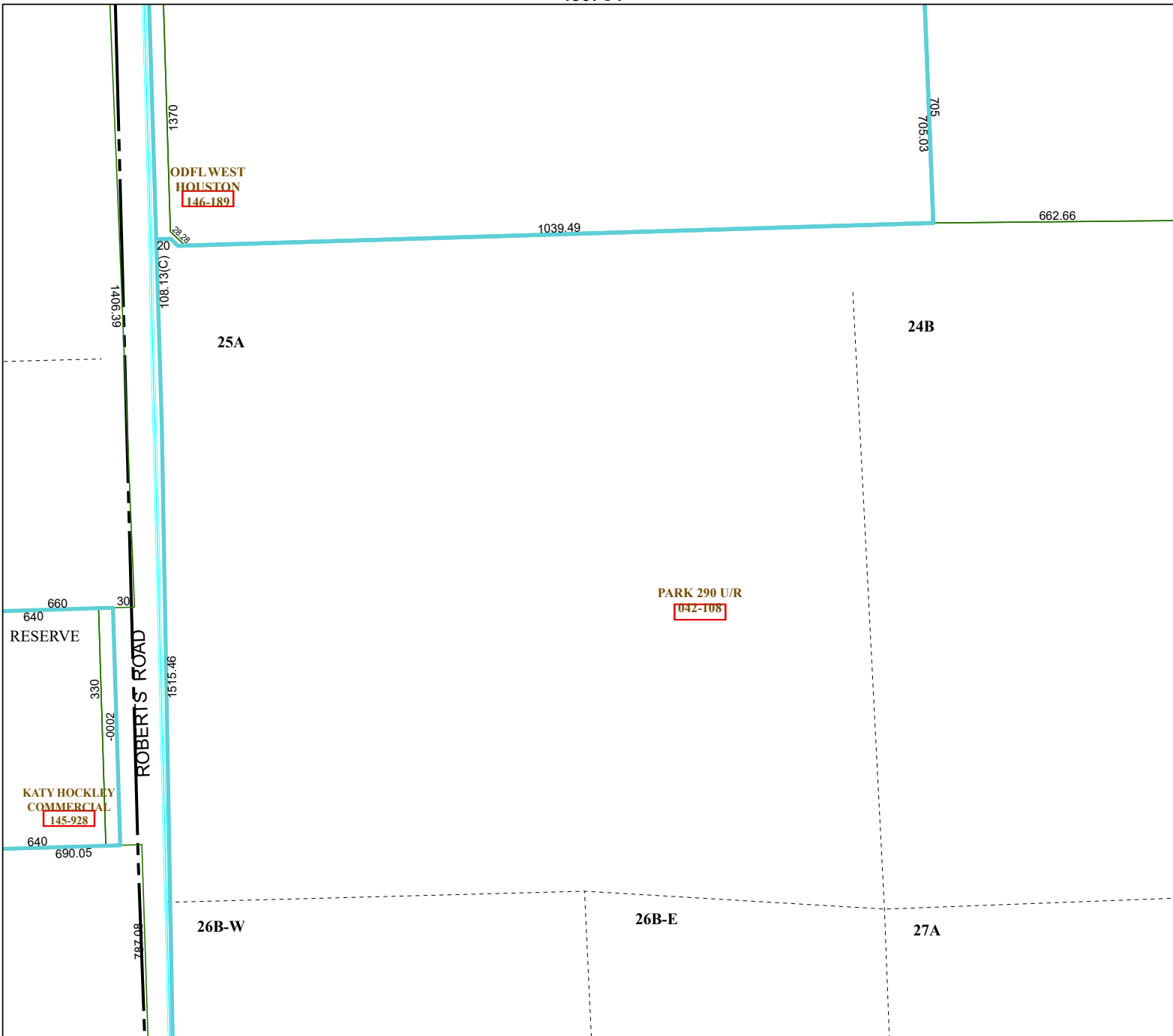
FACET 4367C5

3	4	1	2	3
7	8	5	6	7
11	12	9	10	11

4367C9

4267D8

4367C6



ODFL WEST
HOUSTON
146-189

25A

24B

PARK 290 U/R
042-108

RESERVE

KATY HOCKLEY
COMMERCIAL
145-928

ROBERTS ROAD

26B-W

26B-E

27A