

# Harris Central Appraisal District

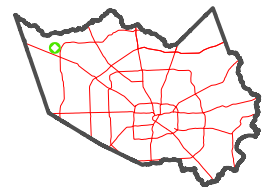


0 45 90 180 Feet

PUBLICATION DATE:  
5/11/2023

Geospatial or map data maintained by the Harris Central Appraisal District is for informational purposes and may not be suitable for legal, engineering, or surveying purposes. It does not represent an on-the-ground survey and only represents the approximate location of property boundaries.

MAP LOCATION

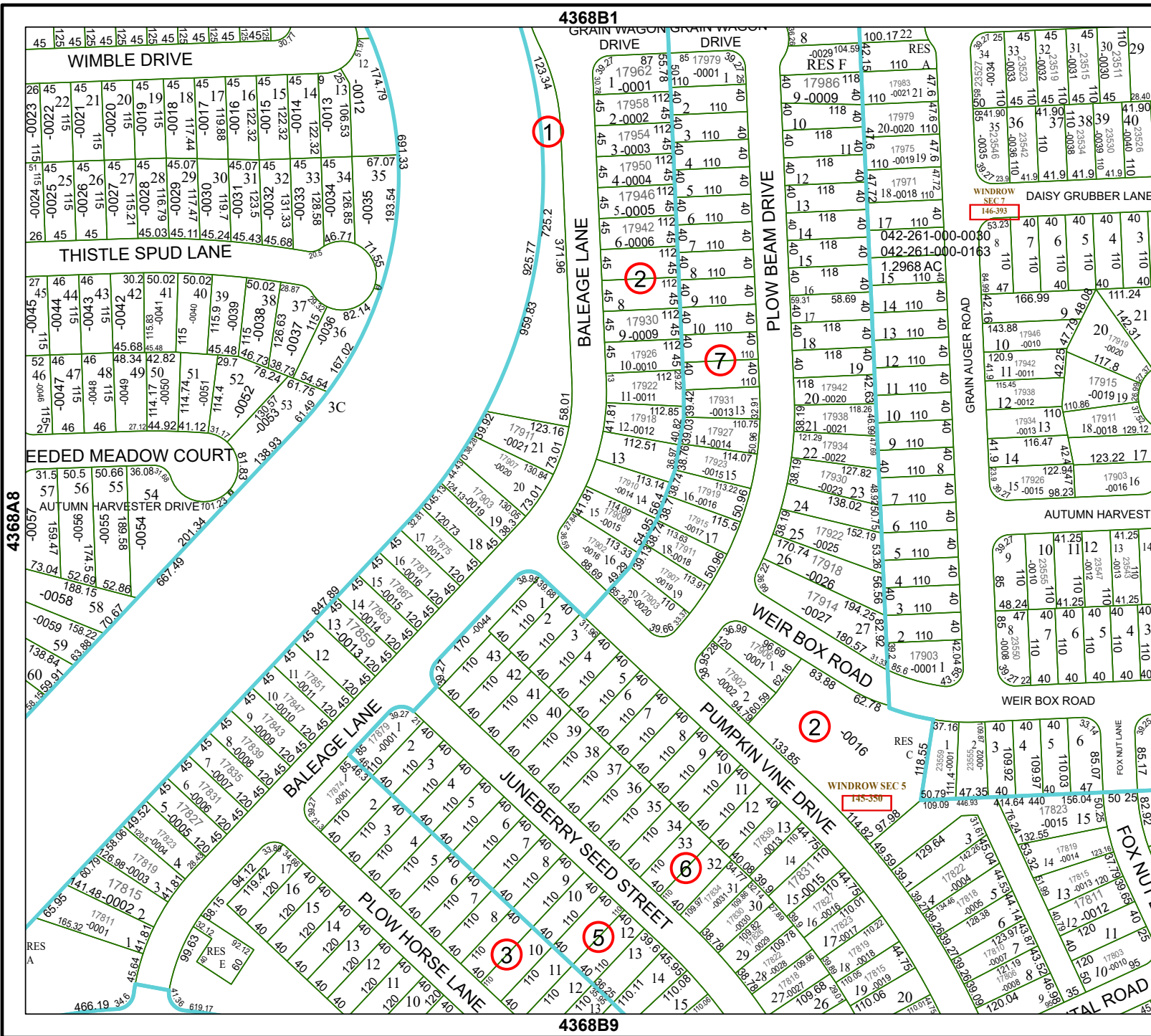


## FACET 4368B5

3	4	1	2	3
7	8	5	6	7
11	12	9	10	11

4368B1

4368B9



4368B6

4368A8