

4368C6

4367A2

4368C9

Harris Central Appraisal District

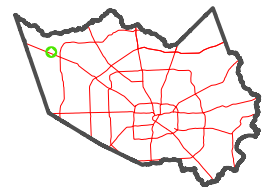


0 45 90 180 Feet

PUBLICATION DATE: 12/30/2023

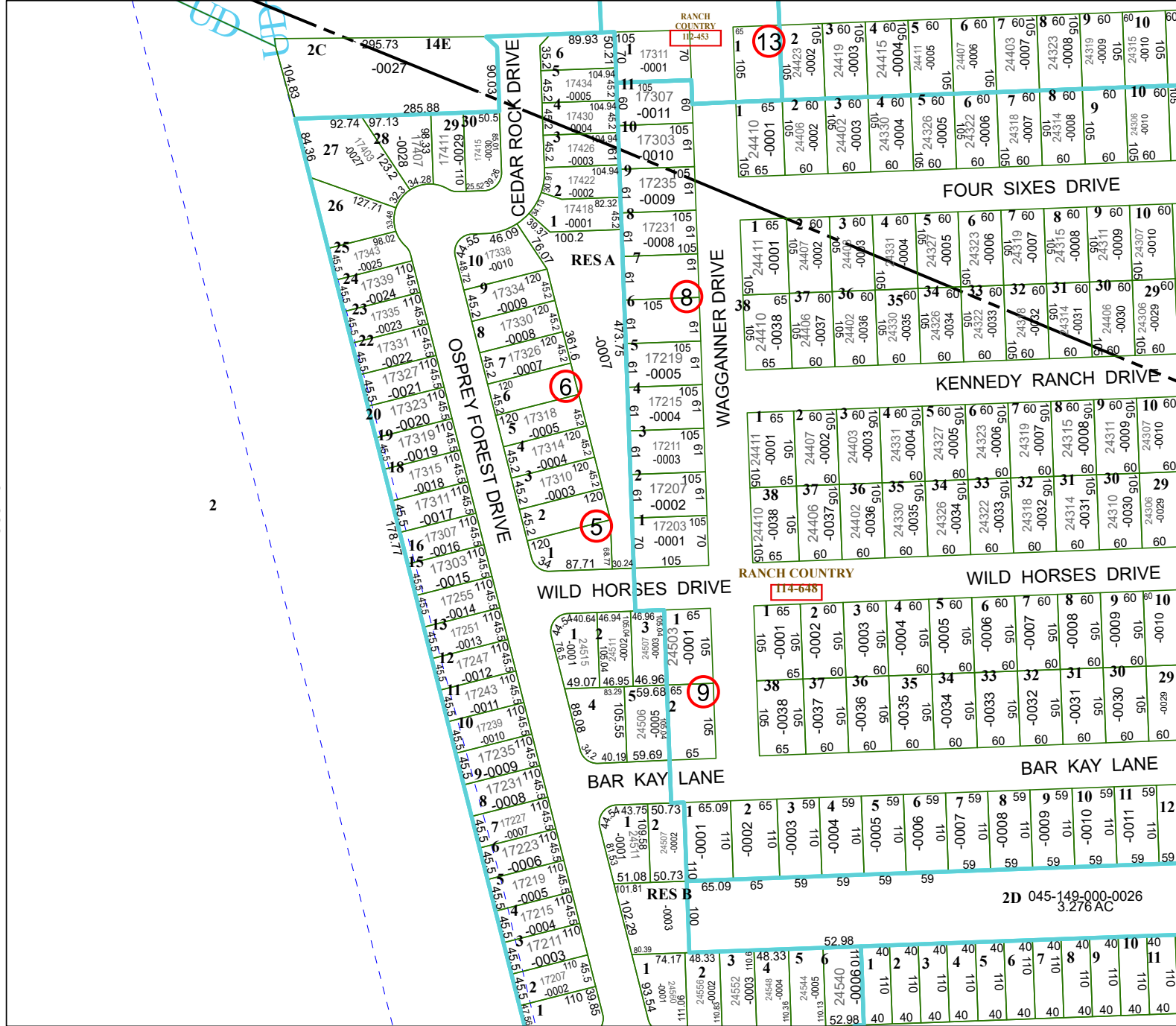
Geospatial or map data maintained by the Harris Central Appraisal District is for informational purposes and may not have been prepared for or be suitable for legal, engineering, or surveying purposes. It does not represent an on-the-ground survey and only represents the approximate location of property boundaries.

MAP LOCATION



FACET 4368C10

8	5	6	7	8
12	9	10	11	12
4	1	2	3	4



4368C11

2D 045-149-000-0026
3.276 AC