

# Harris Central Appraisal District

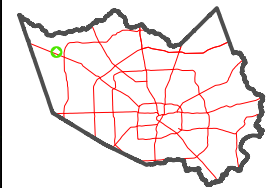


0 45 90 180 Feet

PUBLICATION DATE: 1/5/2023

Geospatial or map data maintained by the Harris Central Appraisal District is for informational purposes and may not have been prepared for or be suitable for legal, engineering, or surveying purposes. It does not represent an on-the-ground survey and only represents the approximate location of property boundaries.

MAP LOCATION

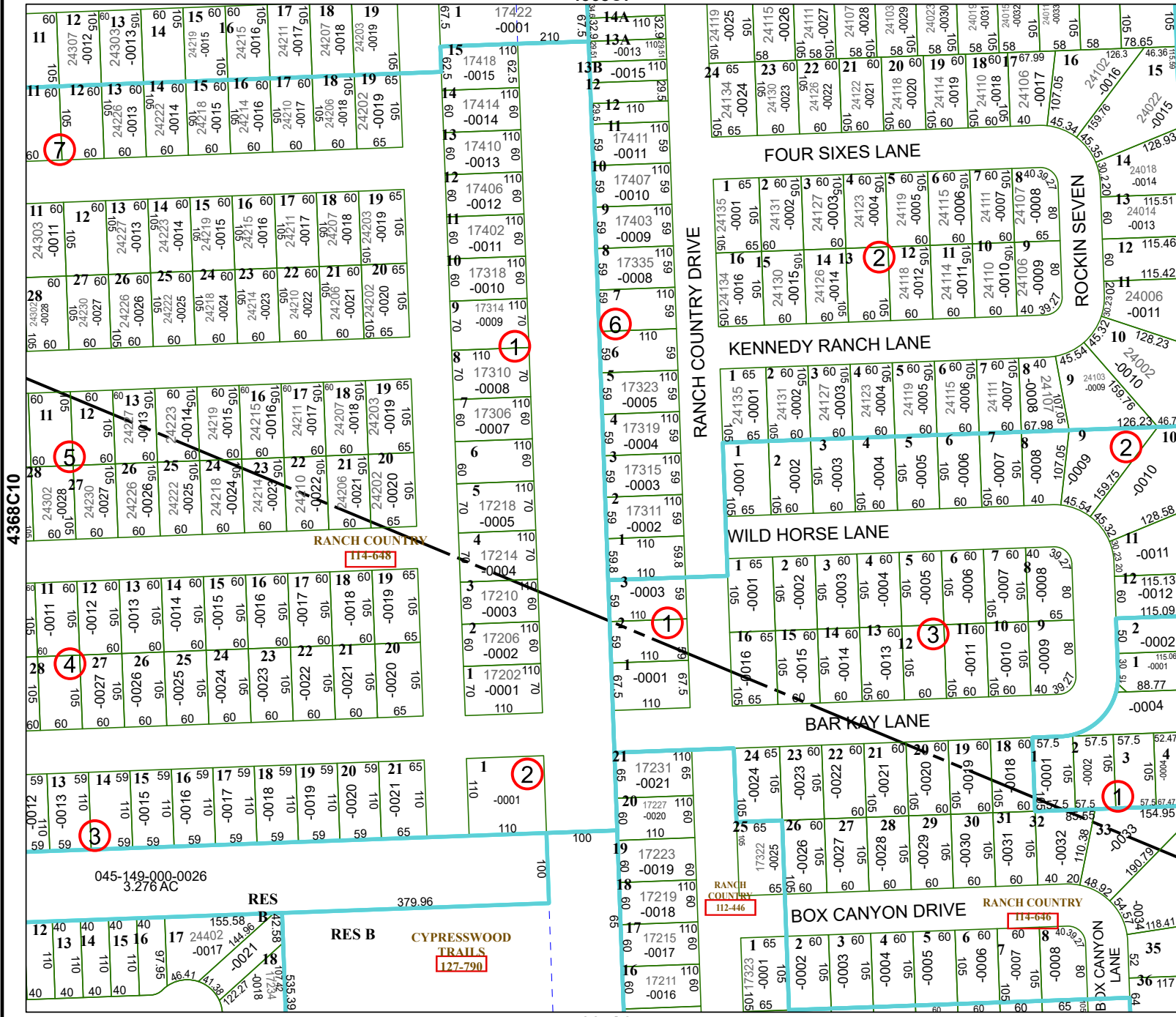


## FACET 4368C11

5	6	7	8	5
9	10	11	12	9
1	2	3	4	1

4368C7

4367A3



4368C10

4368C12

RANCH COUNTRY

114-648

RES

RES B

CYPRESSWOOD TRAILS 127-790

045-149-000-0026  
3.276 AC

379.96

RANCH COUNTRY 112-446

RANCH COUNTRY 114-646