

4368B10

Harris Central Appraisal District



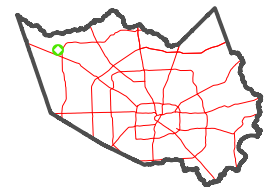
0 45 90 180 Feet

PUBLICATION DATE: 4/24/2023

Geospatial or map data maintained by the Harris Central Appraisal District is for informational purposes and may not have been prepared for or be suitable for legal, engineering, or surveying purposes. It does not represent an on-the-ground survey and only represents the approximate location of property boundaries.



MAP LOCATION



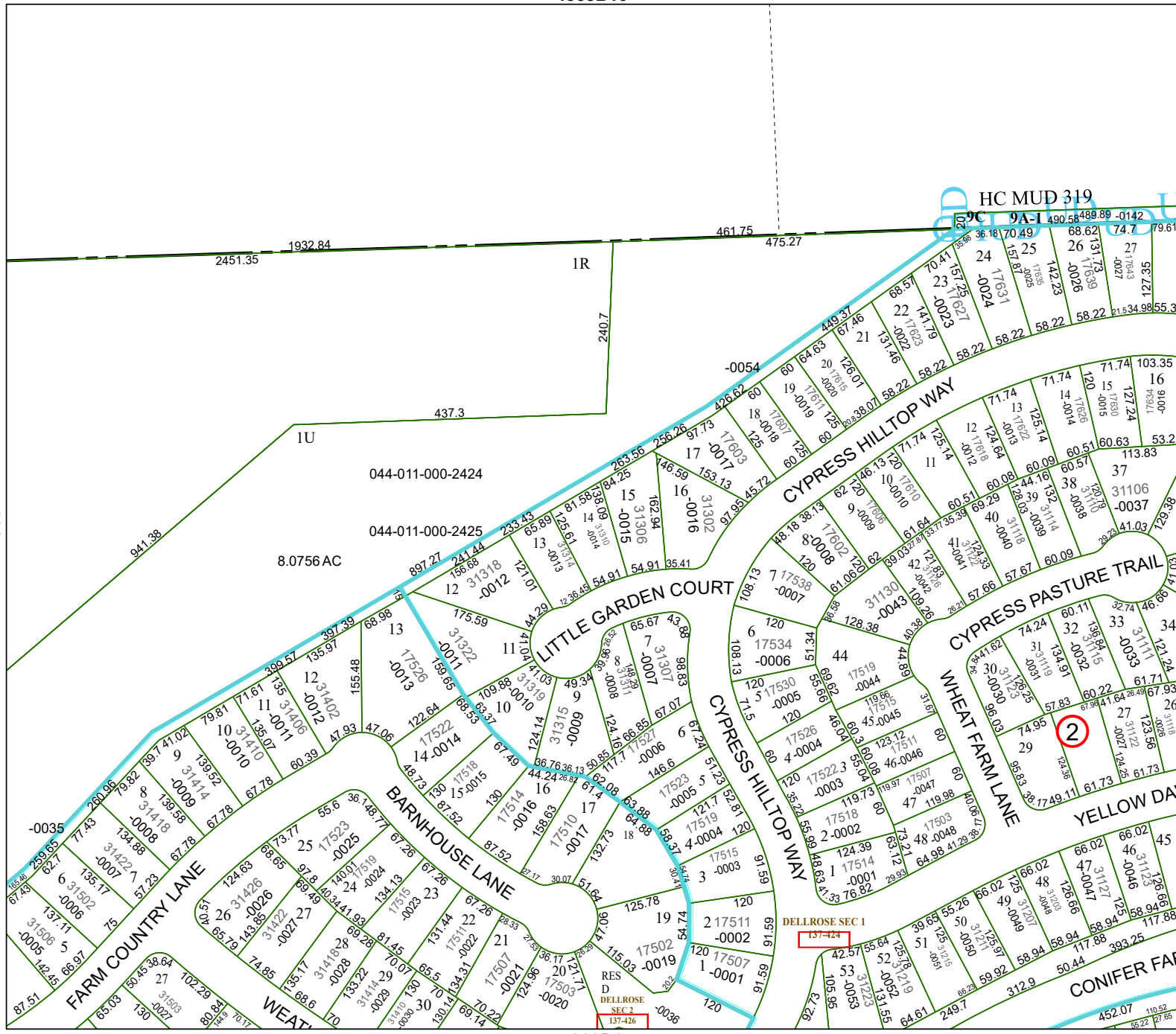
FACET 4368D2

12	9	10	11	12
4	1	2	3	4
8	5	6	7	8

4368D6

4368D1

4368D3



HC MUD 319

9A-1

DELLROSE SEC 1

DELLROSE SEC 2

137-426