

Harris Central Appraisal District

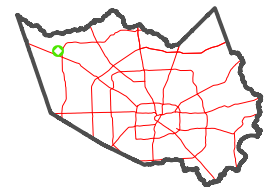


0 45 90 180 Feet

PUBLICATION DATE:
12/30/2023

Geospatial or map data maintained by the Harris Central Appraisal District is for informational purposes and may not have been prepared for or be suitable for legal, engineering, or surveying purposes. It does not represent an on-the-ground survey and only represents the approximate location of property boundaries.

MAP LOCATION



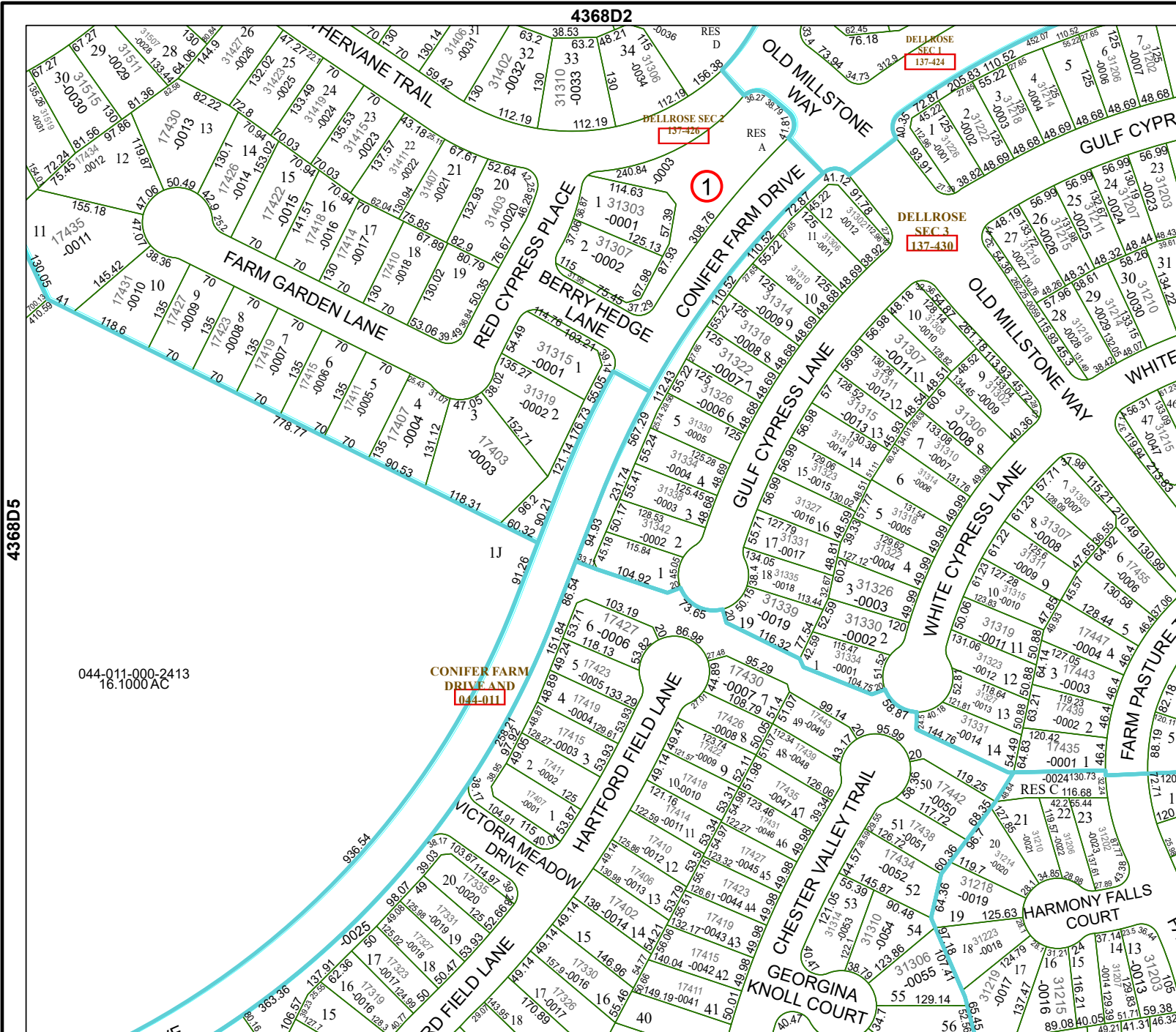
FACET

4368D6

4	1	2	3	4
8	5	6	7	8
12	9	10	11	12

4368D2

4368D10



4368D5

4368D7

044-011-000-2413
16.1000 AC