

4369A11

Harris Central Appraisal District

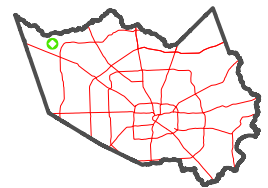


0 45 90 180 Feet

PUBLICATION DATE: 1/5/2023

Geospatial or map data maintained by the Harris Central Appraisal District is for informational purposes and may not be prepared for or be suitable for legal, engineering, or surveying purposes. It does not represent an on-the-ground survey and only represents the approximate location of property boundaries.

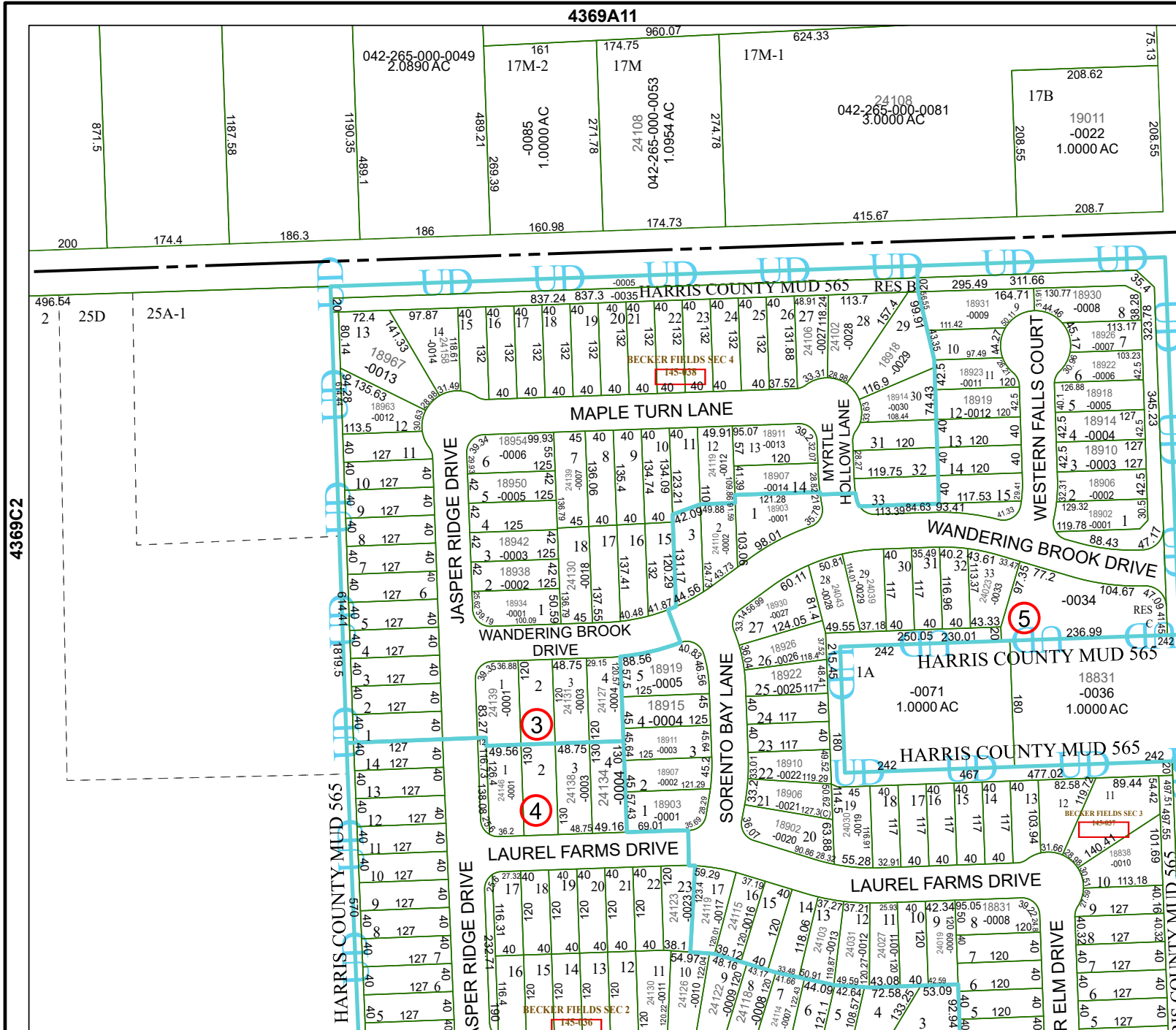
MAP LOCATION



FACET 4369C3

9	10	11	12	9
1	2	3	4	1
5	6	7	8	5

4369C7



4369C2

4369C4

HARRIS COUNTY MUD 565