

4369B11

116-355-001-0001
1.0000 AC
PROVENCE
SQUARE L/R
116-355
427.18
101.91

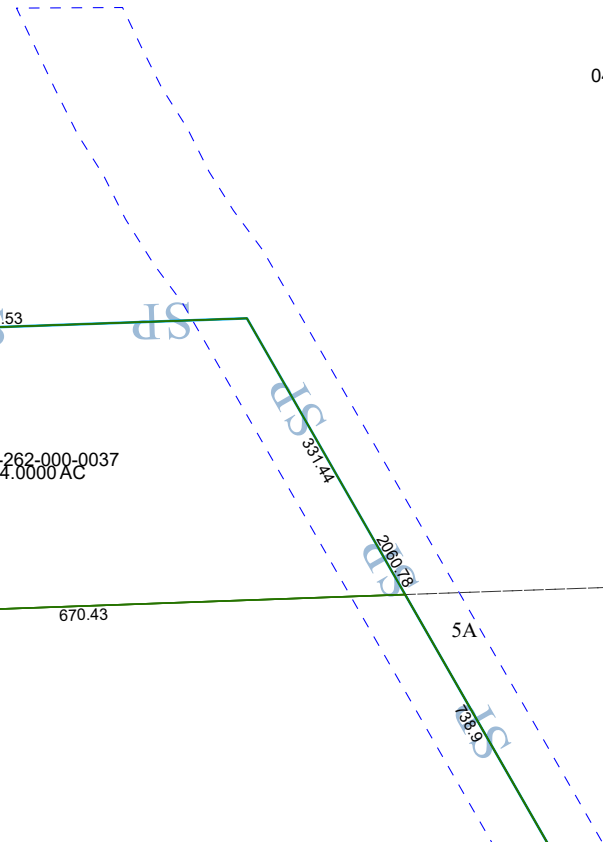
4369D2

18E-4
937.01
465.56
18E-7
939.09
241.55
18E-7A
940.17
241.55
18E
941.24
483.1

BAUER ROAD

293.3
659.62

4A-1
517.72
517.53
042-262-000-0037
4.0000 AC
5A-2
670.43



042-262-000-0003
82.0912 AC

4369D7

Harris Central Appraisal District



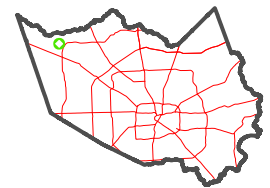
0 45 90 180 Feet

PUBLICATION DATE:
5/21/2024

Geospatial or map data maintained by the Harris Central Appraisal District is for informational purposes and may **not** have been prepared for or be suitable for legal, engineering, or surveying purposes. It does **not** represent an on-the-ground survey and only represents the approximate location of property boundaries.



MAP LOCATION



FACET

4369D3

| | | | | |
|---|----|----|----|---|
| 9 | 10 | 11 | 12 | 9 |
| 1 | 2 | 3 | 4 | 1 |
| 5 | 6 | 7 | 8 | 5 |