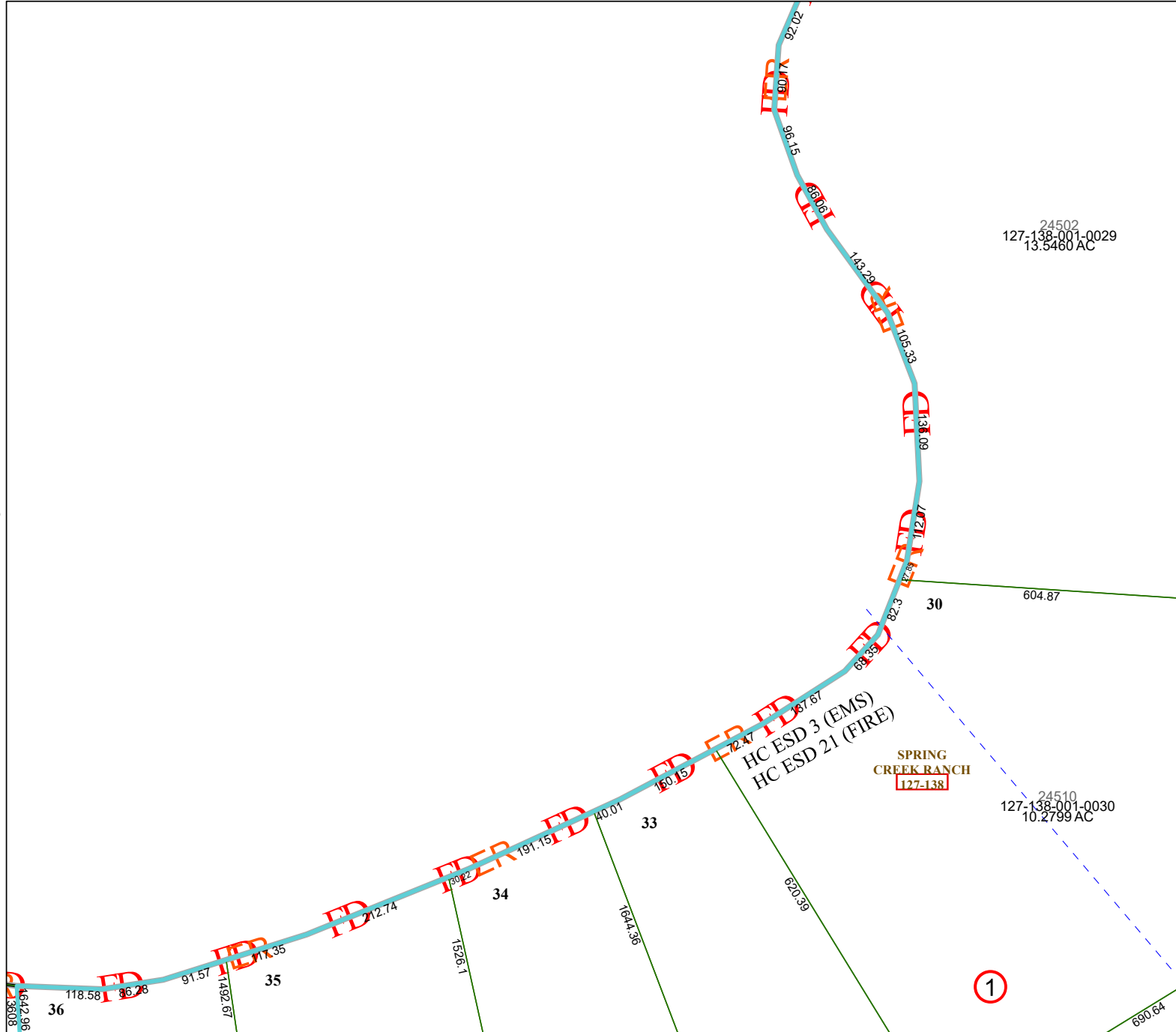


4371C9

4270B4



24502
127-138-001-0029
13.5460 AC

24510
127-138-001-0030
10.2799 AC

Harris Central Appraisal District



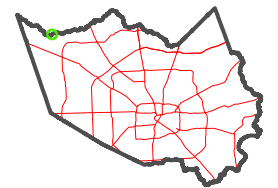
0 45 90 180 Feet

PUBLICATION DATE:
1/5/2023

Geospatial or map data maintained by the Harris Central Appraisal District is for informational purposes and may not have been prepared for or be suitable for legal, engineering, or surveying purposes. It does not represent an on-the-ground survey and only represents the approximate location of property boundaries.



MAP LOCATION



FACET 4370A1

		9	10	11
3	4	1	2	3
7	8	5	6	7

4370A5

1