

4370B7

4370B10

Harris Central Appraisal District



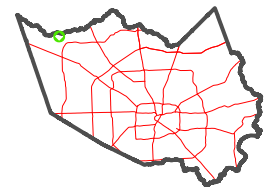
0 45 90 180 Feet

PUBLICATION DATE:
3/11/2024

Geospatial or map data maintained by the Harris Central Appraisal District is for informational purposes and may not have been prepared for or be suitable for legal, engineering, or surveying purposes. It does not represent an on-the-ground survey and only represents the approximate location of property boundaries.



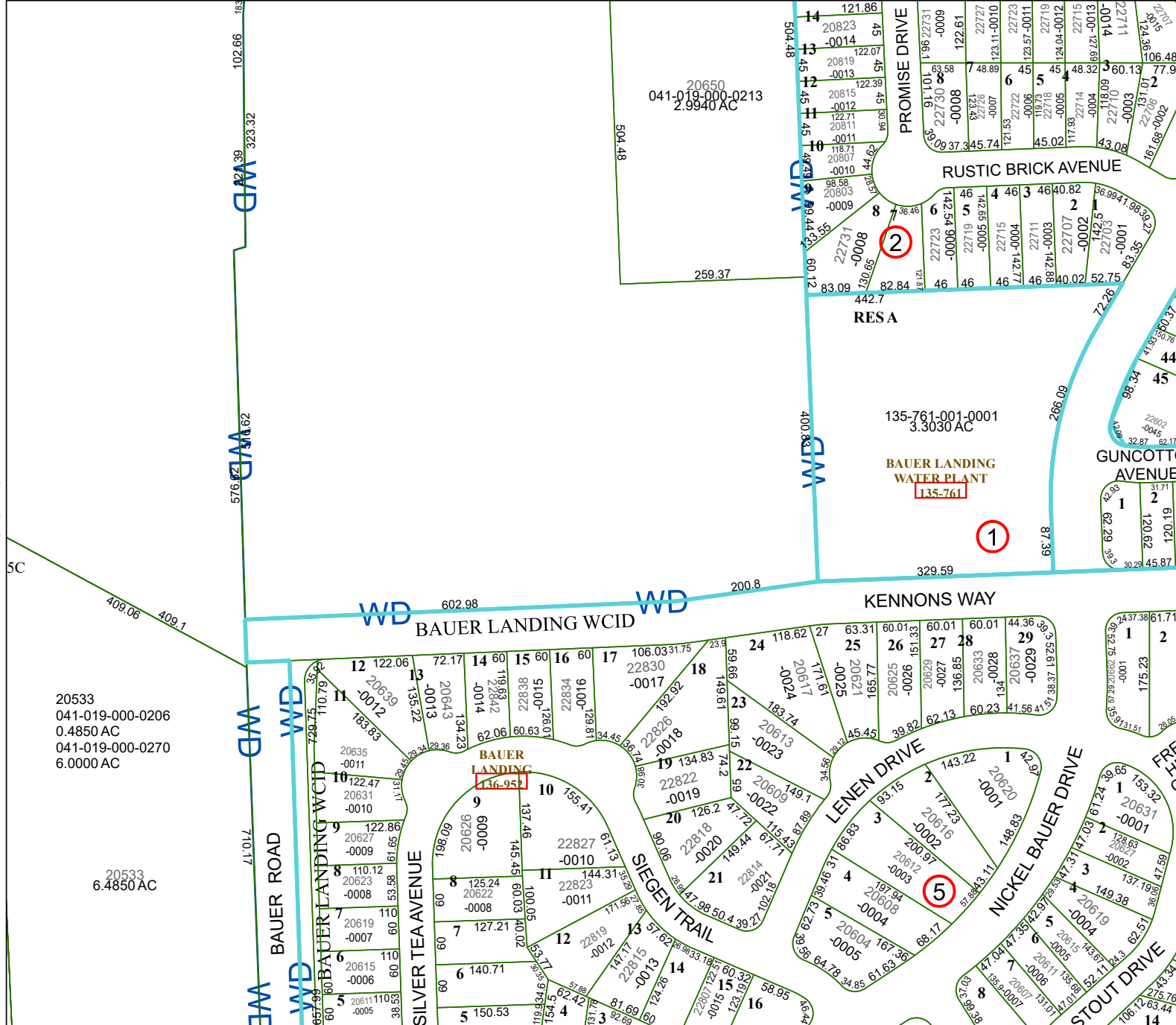
MAP LOCATION



FACET 4370B11

5	6	7	8	5
9	10	11	12	9
1	2	3	4	1

4370D3



20533
041-019-000-0206
0.4850 AC
041-019-000-0270
6.0000 AC

20533
6.4850 AC