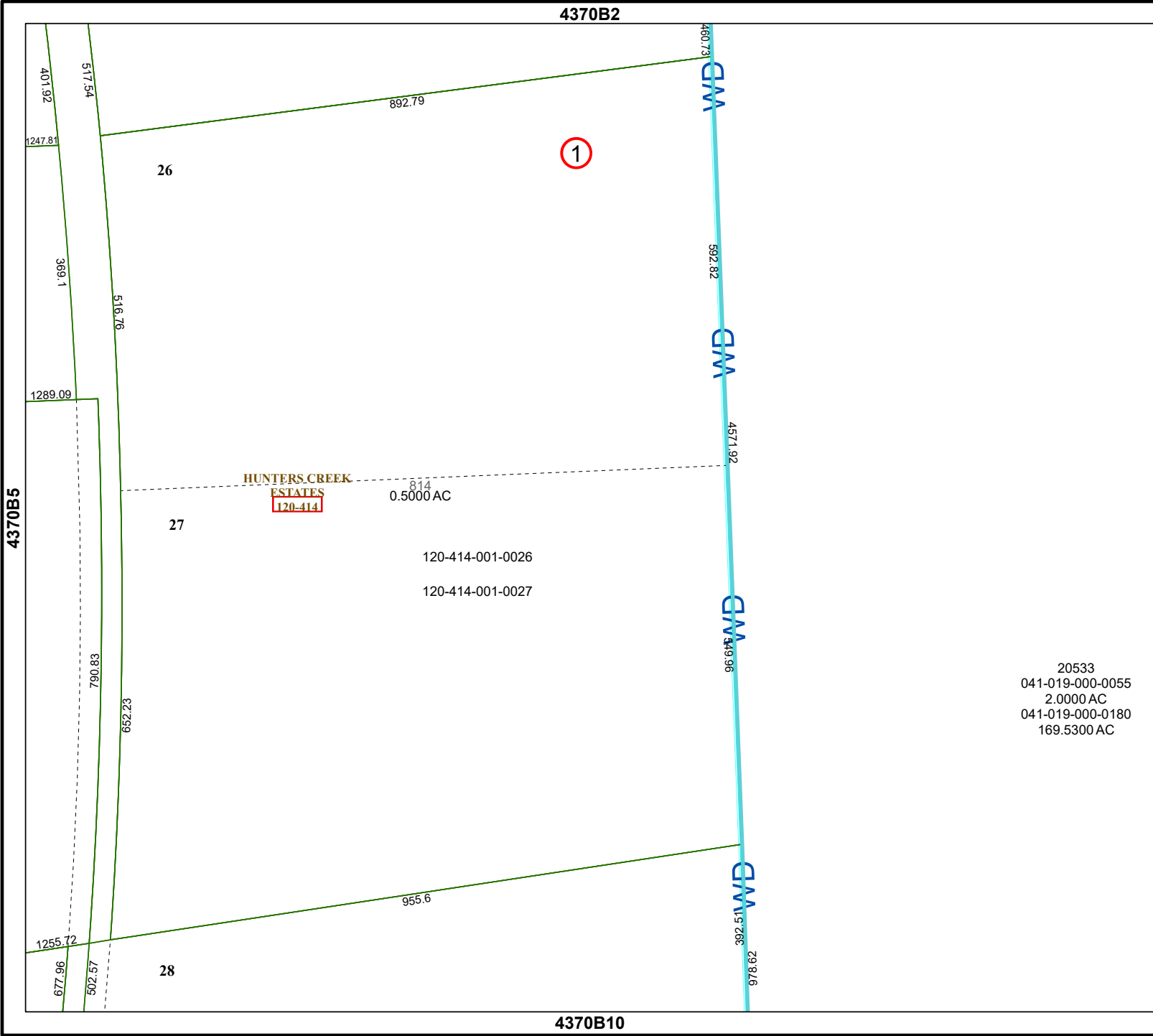


4370B2

4370B10



Harris Central Appraisal District



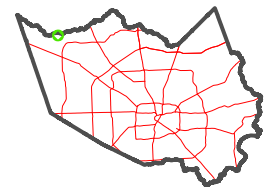
0 45 90 180 Feet

PUBLICATION DATE:
3/11/2024

Geospatial or map data maintained by the Harris Central Appraisal District is for informational purposes and may **not** have been prepared for or be suitable for legal, engineering, or surveying purposes. It does **not** represent an on-the-ground survey and only represents the approximate location of property boundaries.



MAP LOCATION



20533
041-019-000-0055
2.0000 AC
041-019-000-0180
169.5300 AC

FACET 4370B6

4	1	2	3	4
8	5	6	7	8
12	9	10	11	12