

# Harris Central Appraisal District

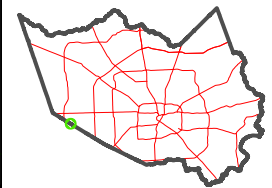


0 45 90 180 Feet

PUBLICATION DATE:  
1/5/2023

Geospatial or map data maintained by the Harris Central Appraisal District is for informational purposes and may not have been prepared for or be suitable for legal, engineering, or surveying purposes. It does not represent an on-the-ground survey and only represents the approximate location of property boundaries.

MAP LOCATION



## FACET

### 4456B11

5	6	7	8	5
9	10	11	12	9
1	2	3	4	1

4456B7

WITTMAN LANE

WITTMAN

128-332-001-0001  
1.5510 AC

RES A1

RES A

ZAMIR MASON  
130-468

US STORAGE CINCO RANCH  
121-421

OAK PARK TRAILS SEC 2  
118-107

118-107-001-0024  
6.1693 AC

OAK PARK TRAILS SEC 4  
119-575

ALEXA CINCO RANCH  
124-090

124-060-001-0001

EQUESTRIAN CENTER COMMERCIAL RESERVE  
120-134

RES A3

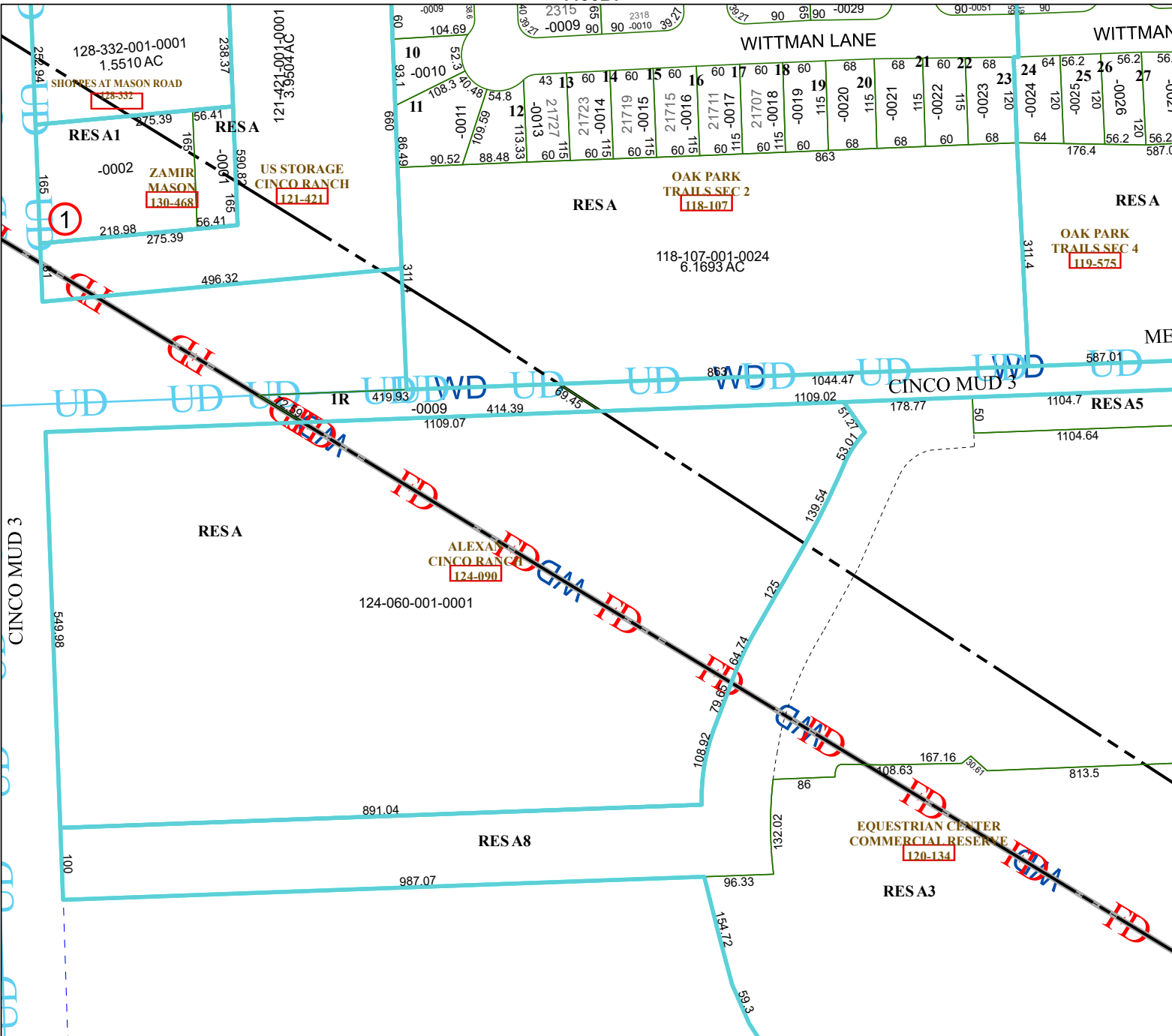
RES A8

4456D3

4456B10

CINCO MUD 3

4456B12



1