

Harris Central Appraisal District

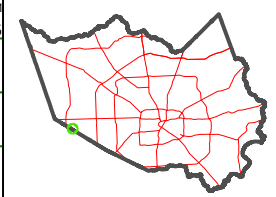


0 45 90 180 Feet

PUBLICATION DATE: 1/5/2023

Geospatial or map data maintained by the Harris Central Appraisal District is for informational purposes and may not have been prepared for or be suitable for legal, engineering, or surveying purposes. It does not represent an on-the-ground survey and only represents the approximate location of property boundaries.

MAP LOCATION



FACET 4456B7

| | | | | |
|---|----|----|----|---|
| 1 | 2 | 3 | 4 | 1 |
| 5 | 6 | 7 | 8 | 5 |
| 9 | 10 | 11 | 12 | 9 |

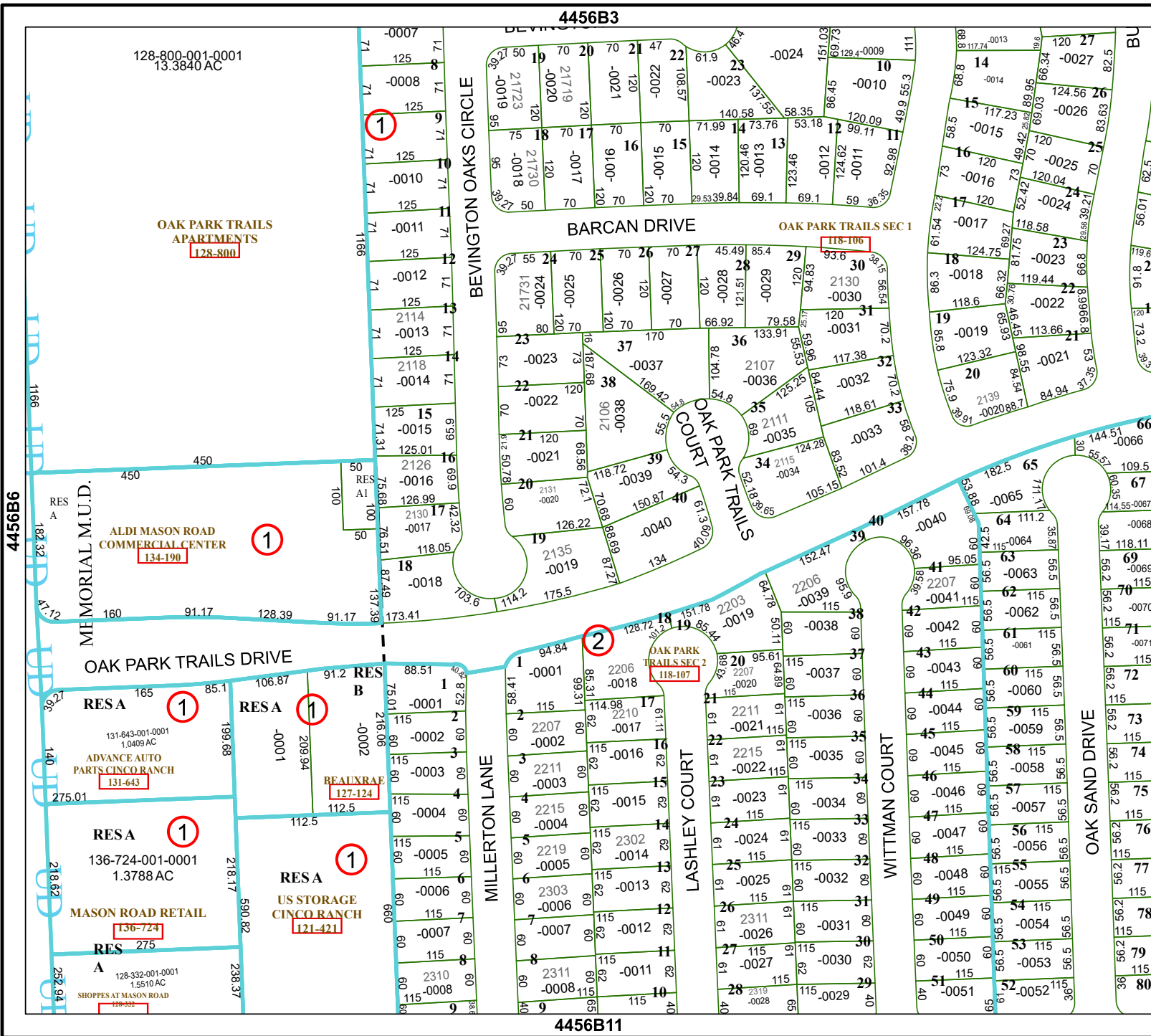
4456B3

BARCAN DRIVE

OAK PARK TRAILS SEC 1

OAK PARK TRAILS COURT

4456B11



128-800-001-0001
13.3840 AC

OAK PARK TRAILS APARTMENTS
128-800

ALDI MASON ROAD COMMERCIAL CENTER
134-190

ADVANCE AUTO PARTS CINCO RANCH
131-643

MASON ROAD RETAIL
136-724

SHOPPES AT MASON ROAD
128-800

BEAUXRAE
127-124

US STORAGE CINCO RANCH
121-421

OAK PARK TRAILS SEC 2
118-107