

# Harris Central Appraisal District

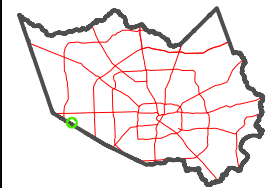


0 45 90 180 Feet

PUBLICATION DATE: 1/5/2023

Geospatial or map data maintained by the Harris Central Appraisal District is for informational purposes and may not have been prepared for or be suitable for legal, engineering, or surveying purposes. It does not represent an on-the-ground survey and only represents the approximate location of property boundaries.

MAP LOCATION

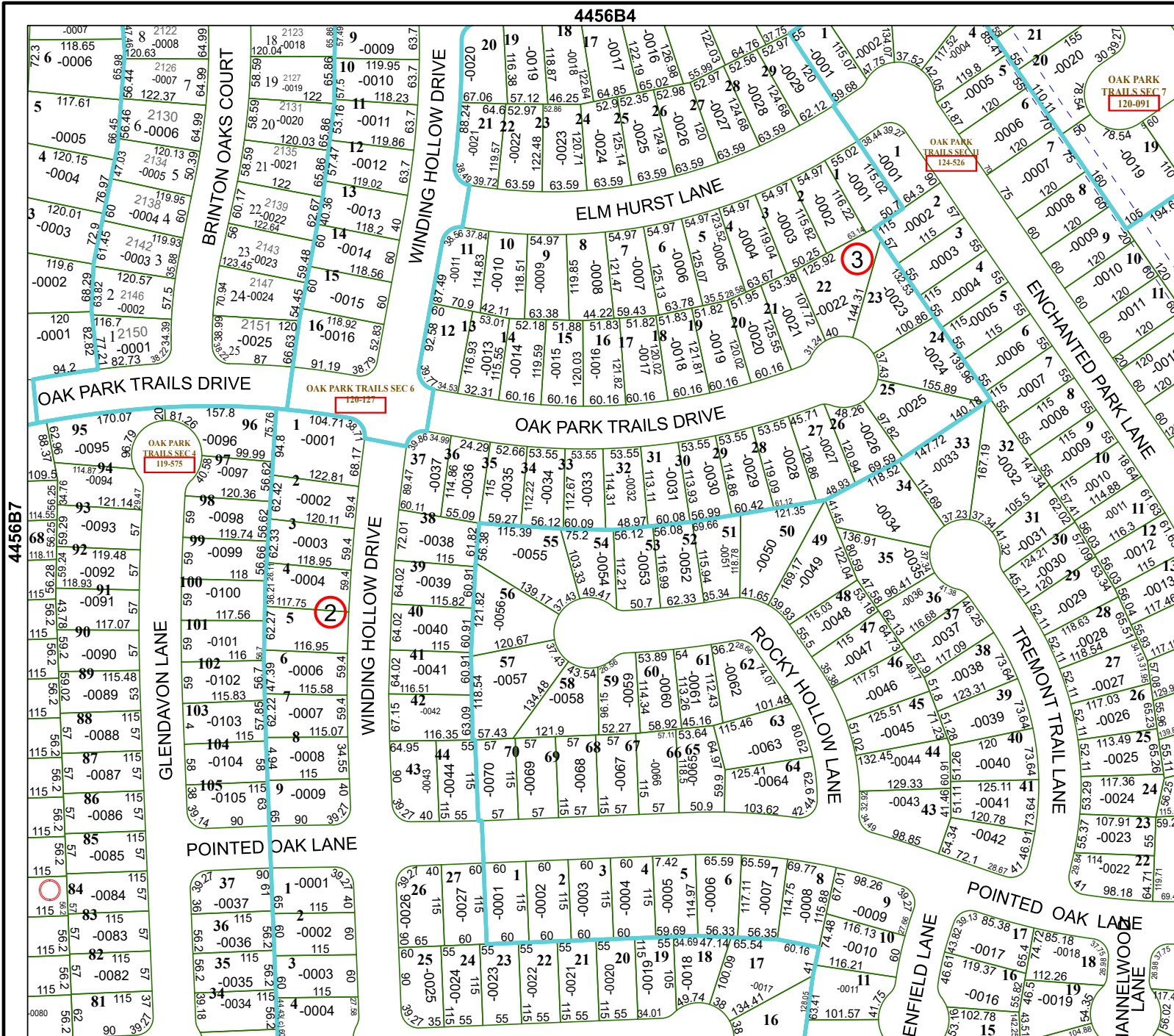


## FACET 4456B8

2	3	4	5	6
6	7	8	9	10

4456B4

4456B12



OAK PARK TRAILS SEC 7  
120-091

OAK PARK TRAILS SEC 1  
124-526

OAK PARK TRAILS SEC 6  
120-127

OAK PARK TRAILS SEC 4  
119-575

4456B7

4456A5