

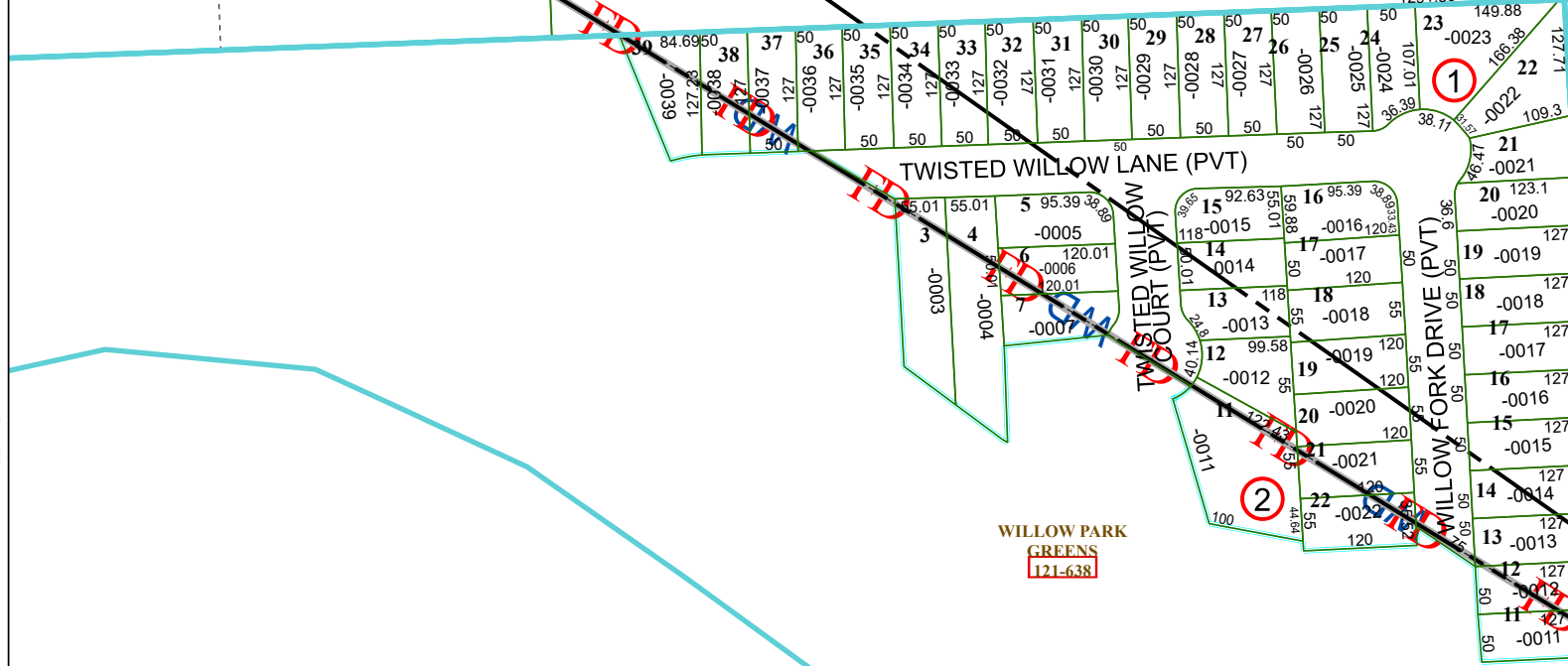
4456B12

HC ESD 48 (EMS/FIRE)  
ID ID GND

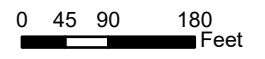
EQUESTRIAN CENTER  
COMMERCIAL RESERVE  
120-134

RES A6

120-134-001-0007  
2.1900 AC



# Harris Central Appraisal District

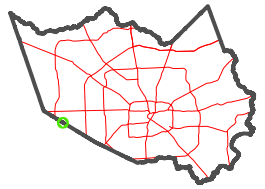


PUBLICATION DATE:  
1/5/2023

Geospatial or map data maintained by the Harris Central Appraisal District is for informational purposes and may not have been prepared for or be suitable for legal, engineering, or surveying purposes. It does not represent an on-the-ground survey and only represents the approximate location of property boundaries.



MAP LOCATION



## FACET 4456D4

10	11	12	9	10
2	3	4	1	2
6	7	8	5	6

4456D8

4456D3

4456C1