

4458A5

Harris Central Appraisal District



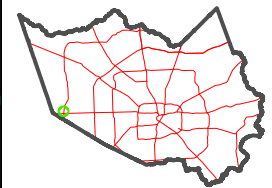
0 50 100 200 Feet

PUBLICATION DATE: 12/4/2025

Geospatial or map data maintained by the Harris Central Appraisal District is for informational purposes and may not have been prepared for or be suitable for legal, engineering, or surveying purposes. It does not represent an on-the-ground survey and only represents the approximate location of property boundaries.



MAP LOCATION



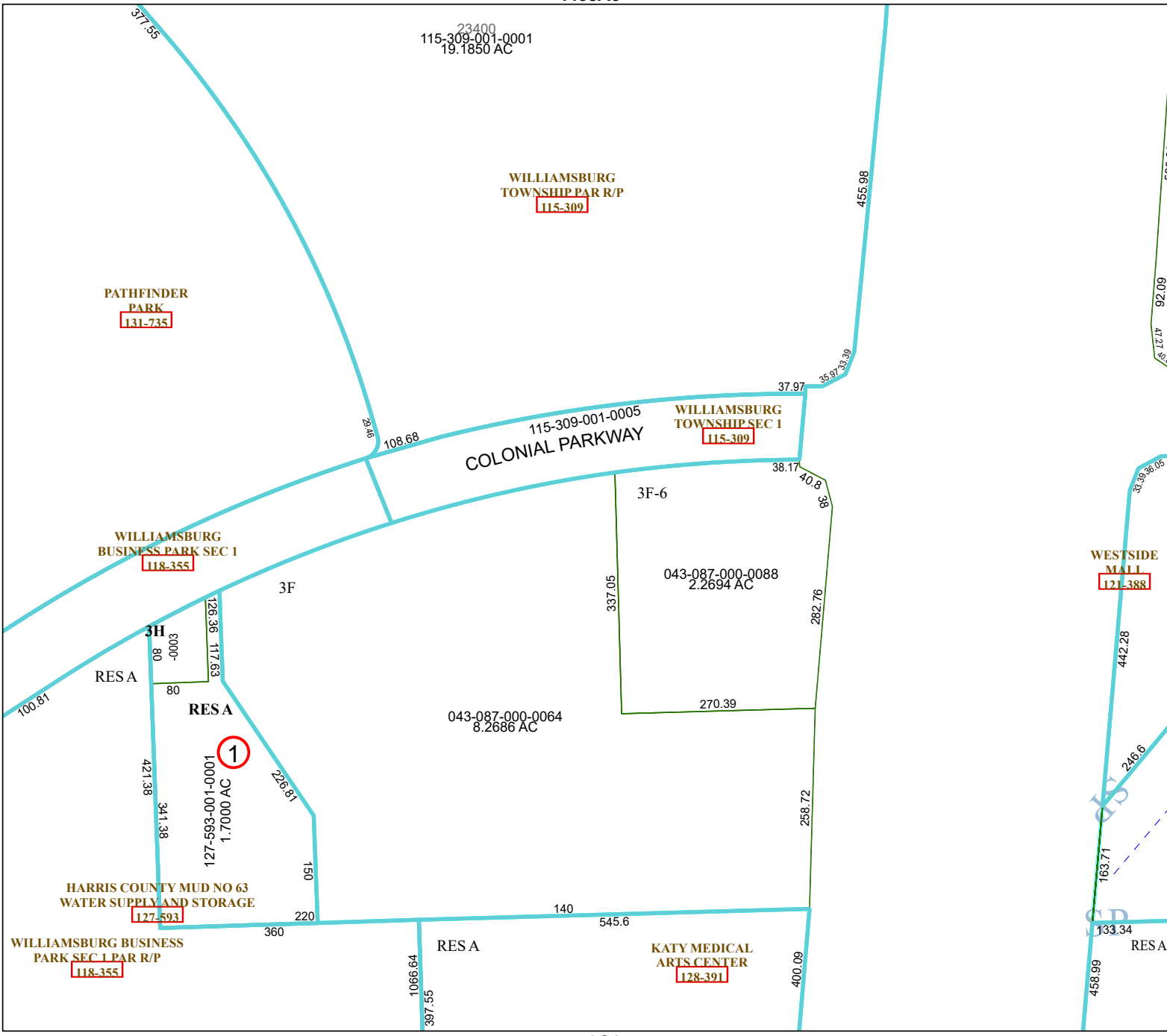
FACET 4458A9

| | | | | |
|----|----|---|----|----|
| 7 | 8 | 5 | 6 | 7 |
| 11 | 12 | 9 | 10 | 11 |
| 3 | 4 | 1 | 2 | 3 |

4458C1

4358B12

4458A10



PATHFINDER PARK
131-735

WILLIAMSBURG TOWNSHIP PAR R/P
115-309

WILLIAMSBURG TOWNSHIP SEC 1
115-309

WILLIAMSBURG BUSINESS PARK SEC 1
118-355

3H

RESA

RESA

1

HARRIS COUNTY MUD NO 63 WATER SUPPLY AND STORAGE
127-593

WILLIAMSBURG BUSINESS PARK SEC 1 PAR R/P
118-355

RESA

KATY MEDICAL ARTS CENTER
128-391

WESTSIDE MALL
121-388

RESA 2