

# Harris Central Appraisal District

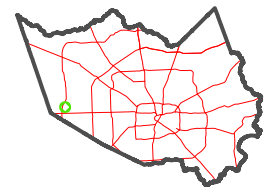


0 45 90 180 Feet

PUBLICATION DATE: 1/5/2023

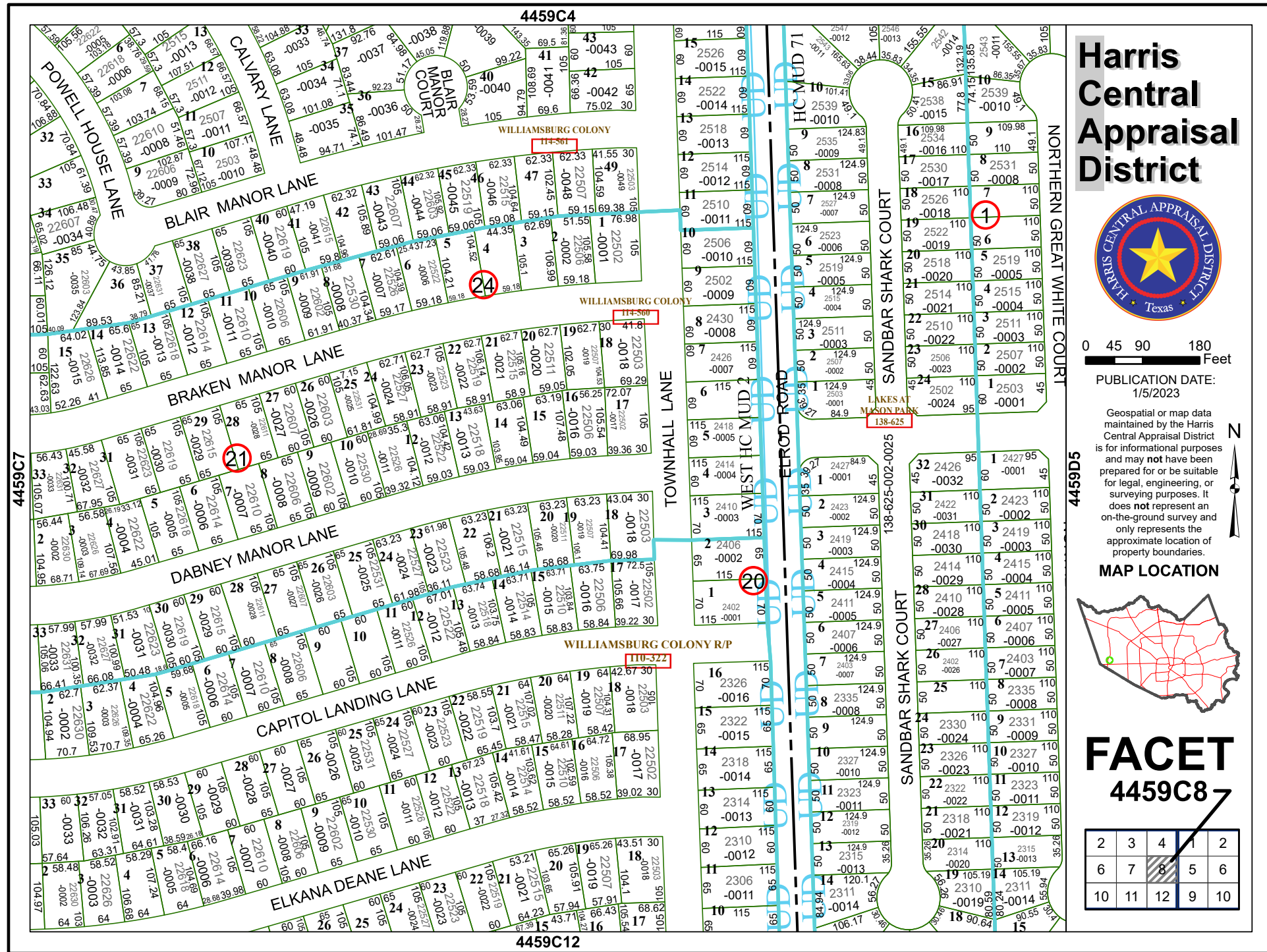
Geospatial or map data maintained by the Harris Central Appraisal District is for informational purposes and may not have been prepared for or be suitable for legal, engineering, or surveying purposes. It does not represent an on-the-ground survey and only represents the approximate location of property boundaries.

MAP LOCATION



## FACET 4459C8

2	3	4	5	6
6	7	8	9	10



4459C4

4459C12

4459C7

4459D5

WILLIAMSBURG COLONY RP

LAKES AT MASON PARK

SANDBAR SHARK COURT

NORTHERN GREAT WHITE COURT

TOWNHALL LANE

WEST HC MUD 2

ELROD ROAD

HC MUD 71

114-361

114-360

110-327

138-625

138-625-002-0025