

4460A3

Harris Central Appraisal District



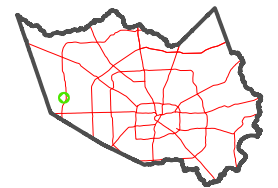
0 45 90 180 Feet

PUBLICATION DATE:
4/22/2024

Geospatial or map data maintained by the Harris Central Appraisal District is for informational purposes and may **not** have been prepared for or be suitable for legal, engineering, or surveying purposes. It does **not** represent an on-the-ground survey and only represents the approximate location of property boundaries.



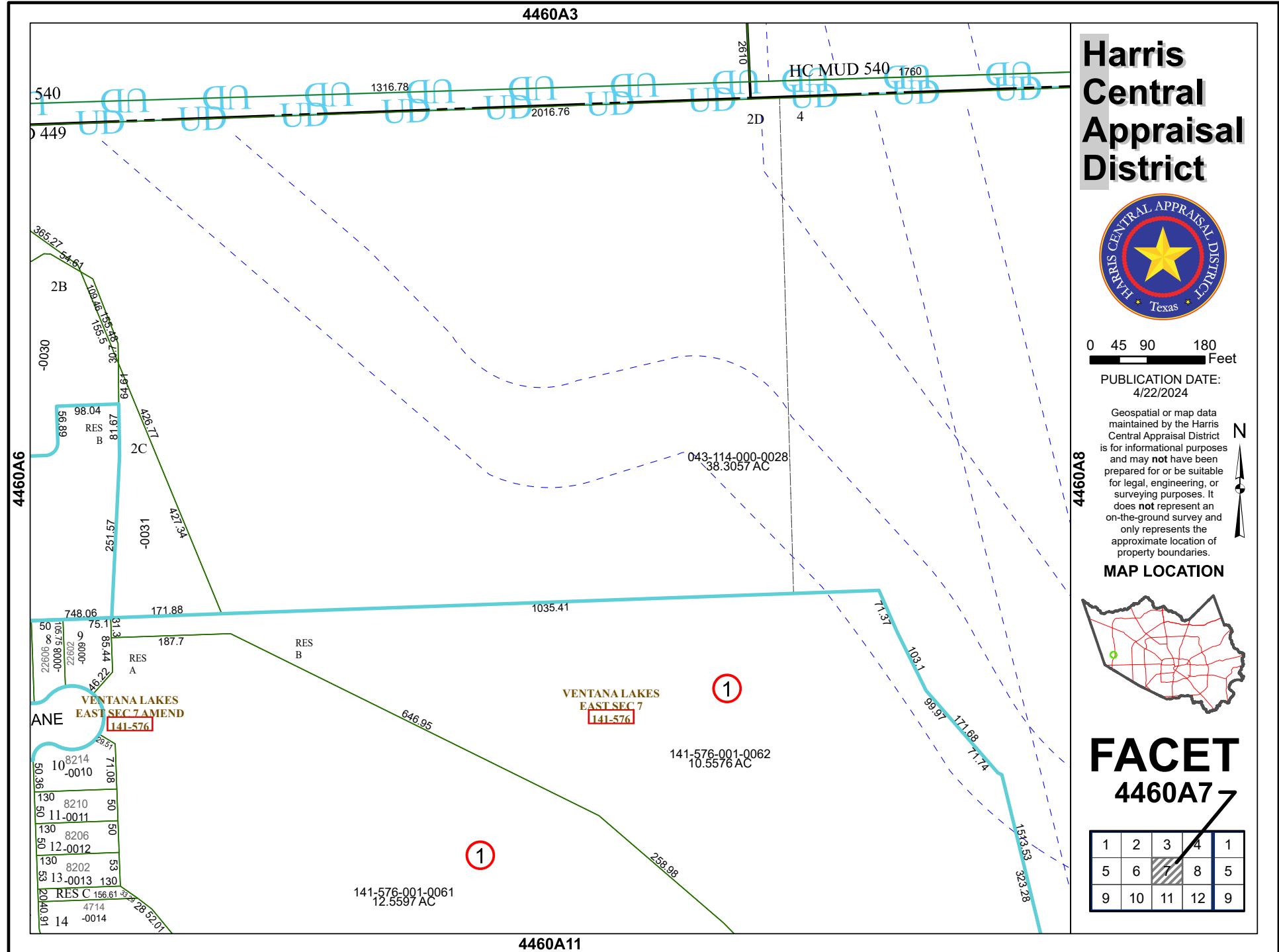
MAP LOCATION



FACET

4460A7

1	2	3	4	1
5	6	7	8	5
9	10	11	12	9



540

1316.78

HC MUD 540 1760

449

2016.76

2D

4

2B

365.27
54.61

-0030

98.04
81.67

2C

RES B

68.99

106.86

151.59

30.7

64.84

426.11

421.34

-0031

251.57

748.06

171.88

1035.41

50

75.1

187.7

RES B

RES A

22606

10575

8000

20972

486.22

22606

10575

8000

20972

486.22

22606

10575

8000

20972

486.22

22606

10575

8000

20972

486.22

22606

10575

8000

20972

486.22

22606

10575

8000

20972

486.22

22606

10575

8000

20972

486.22

22606

10575

8000

20972

486.22

22606

10575

8000

20972

486.22

22606

10575

8000

20972

486.22

22606

10575

8000

20972

486.22

22606

10575

8000

20972

486.22

22606

10575

8000

20972

486.22

22606

10575

8000

20972

486.22

4460A11