

4460C6

Harris Central Appraisal District



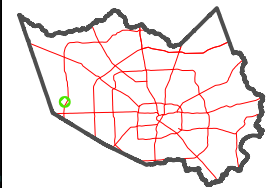
0 45 90 180 Feet

PUBLICATION DATE: 1/9/2025

Geospatial or map data maintained by the Harris Central Appraisal District is for informational purposes and may not have been prepared for or be suitable for legal, engineering, or surveying purposes. It does not represent an on-the-ground survey and only represents the approximate location of property boundaries.



MAP LOCATION



FACET 4460C10

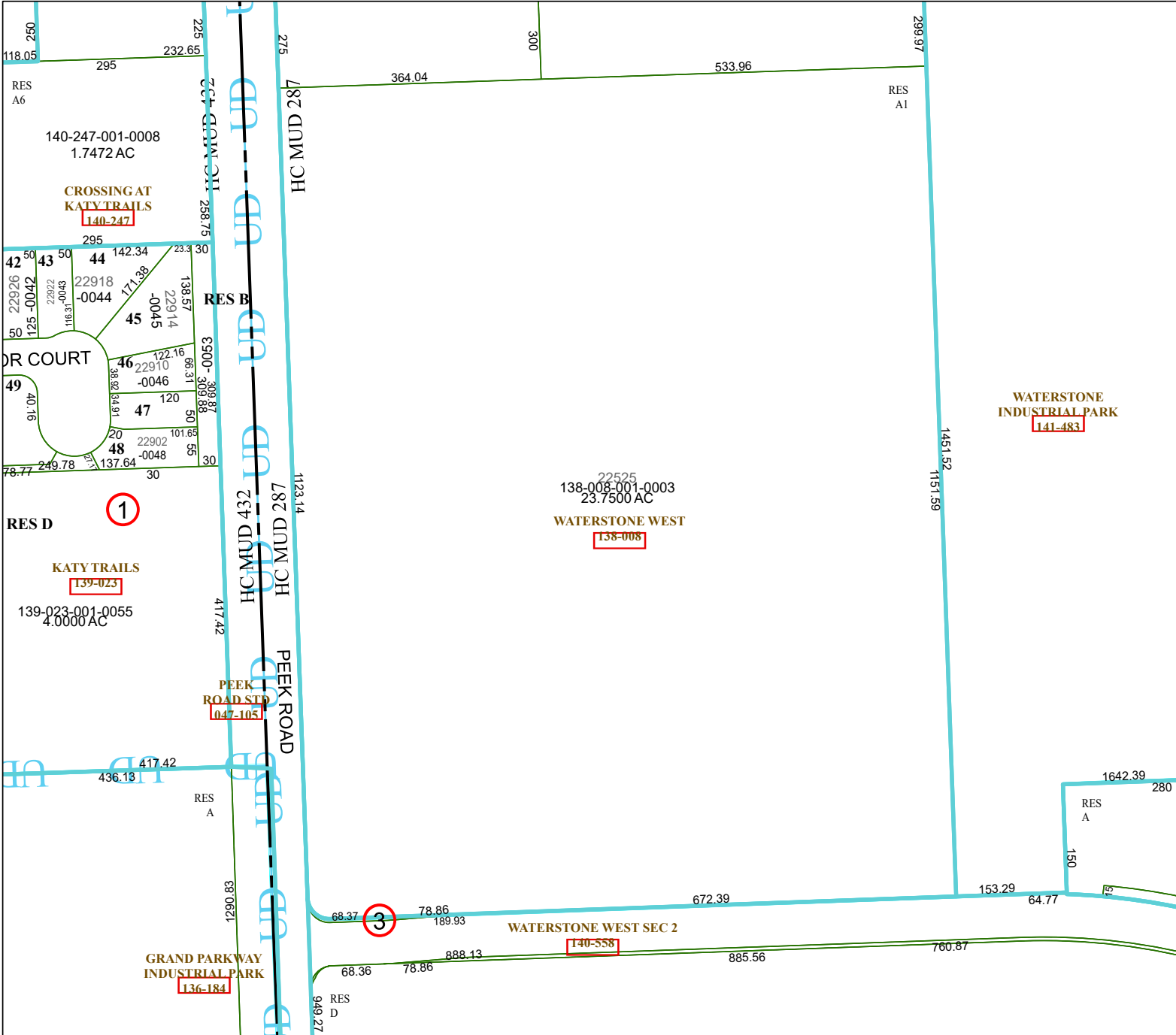
8	5	6	7	8
12	9	10	11	12
4	1	2	3	4

22525
138-008-001-0003
23.7500 AC
WATERSTONE WEST
138-008

WATERSTONE INDUSTRIAL PARK
141-483

WATERSTONE WEST SEC 2
140-558

GRAND PARKWAY INDUSTRIAL PARK
136-184



4459A2

4460C9

4460C11