

Harris Central Appraisal District

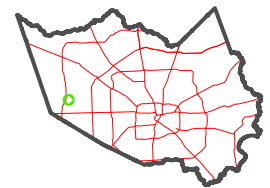


0 45 90 180 Feet

PUBLICATION DATE: 1/5/2023

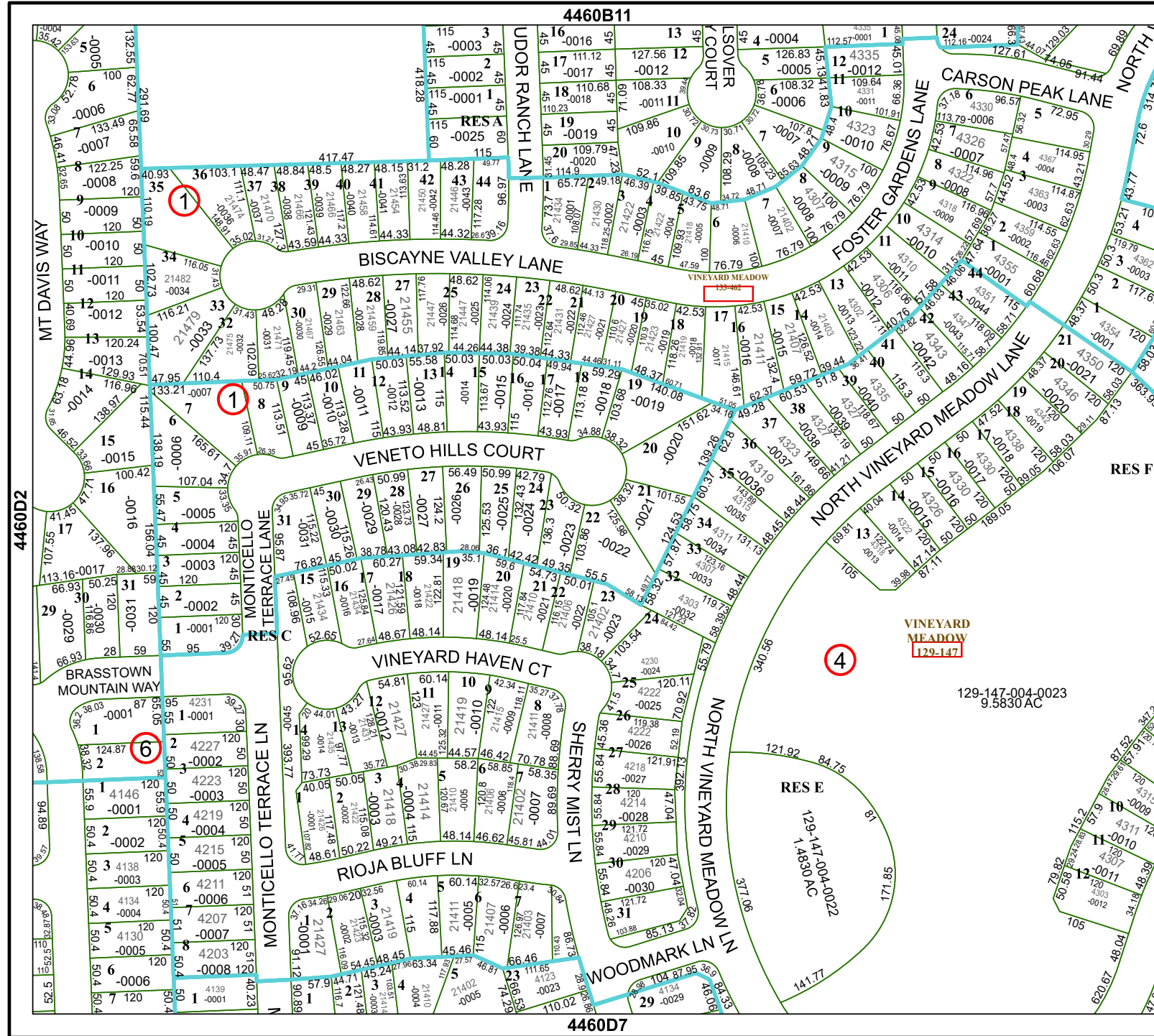
Geospatial or map data maintained by the Harris Central Appraisal District is for informational purposes and may not have been prepared for or be suitable for legal, engineering, or surveying purposes. It does not represent an on-the-ground survey and only represents the approximate location of property boundaries.

MAP LOCATION



FACET 4460D3

9	10	11	12	9
1	2	3	4	1
5	6	7	8	5



4460B11

4460D7

RES F

VINEYARD MEADOW
129-147

129-147-004-0023
9.5830 AC

RES E
129-147-004-0022
1.4830 AC