

# Harris Central Appraisal District

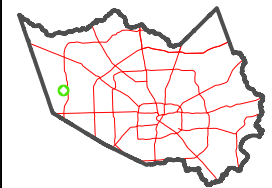


0 45 90 180 Feet

PUBLICATION DATE: 1/23/2024

Geospatial or map data maintained by the Harris Central Appraisal District is for informational purposes and may not have been prepared for or be suitable for legal, engineering, or surveying purposes. It does not represent an on-the-ground survey and only represents the approximate location of property boundaries.

MAP LOCATION

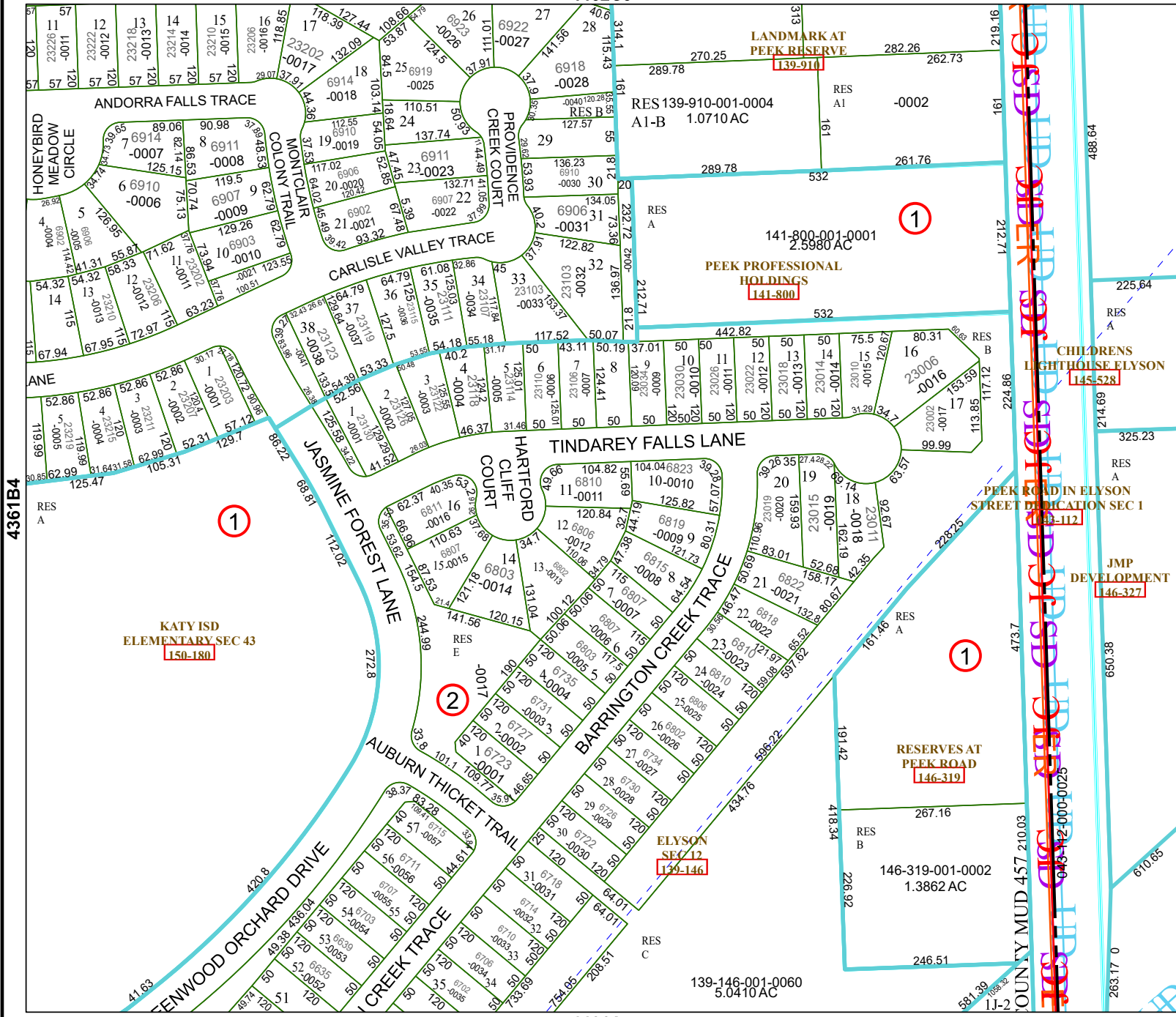


## FACET 4461A1

11	12	9	10	11
3	4	1	2	3
7	8	5	6	7

4462C9

4461A5



4361B4

4461A2

HARRIS CENTRAL APPRAISAL DISTRICT  
 COUNTY MUD 457 210.03  
 4461A1