

4462C11

4461A2

Harris Central Appraisal District



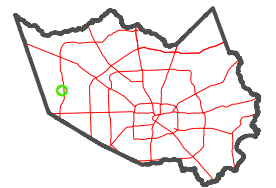
0 45 90 180 Feet

PUBLICATION DATE:
4/8/2024

Geospatial or map data maintained by the Harris Central Appraisal District is for informational purposes and may **not** have been prepared for or be suitable for legal, engineering, or surveying purposes. It does **not** represent an on-the-ground survey and only represents the approximate location of property boundaries.



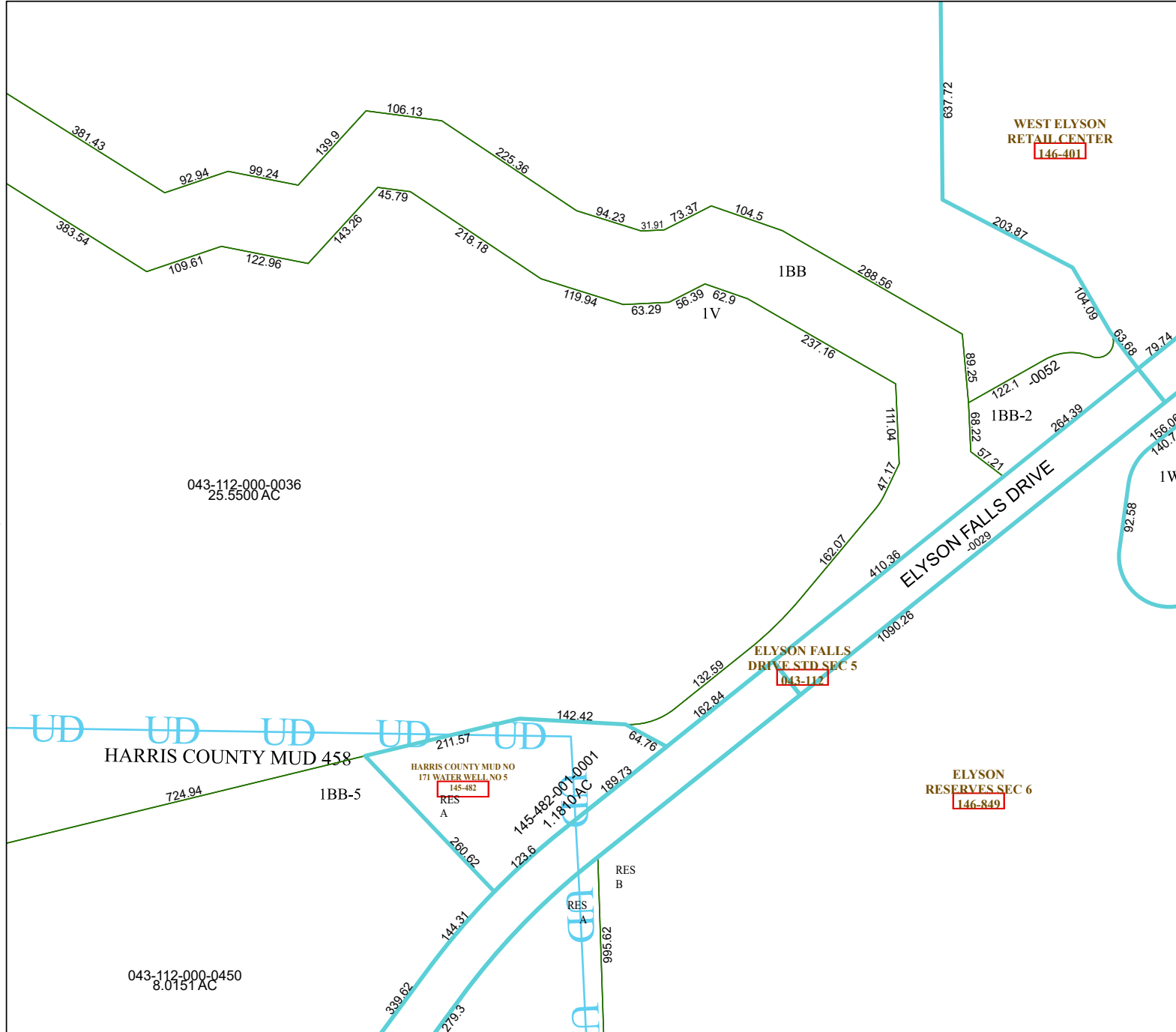
MAP LOCATION



FACET 4461A3

9	10	11	12	9
1	2	3	4	1
5	6	7	8	5

4461A7



043-112-000-0036
25.5500 AC

HARRIS COUNTY MUD 458

HARRIS COUNTY MUD NO
171 WATER WELL NO 5
RES
A
145-482

ELYSON FALLS
DRIVE STD SEC 5
143-112

ELYSON
RESERVES SEC 6
146-849

043-112-000-0450
8.0151 AC