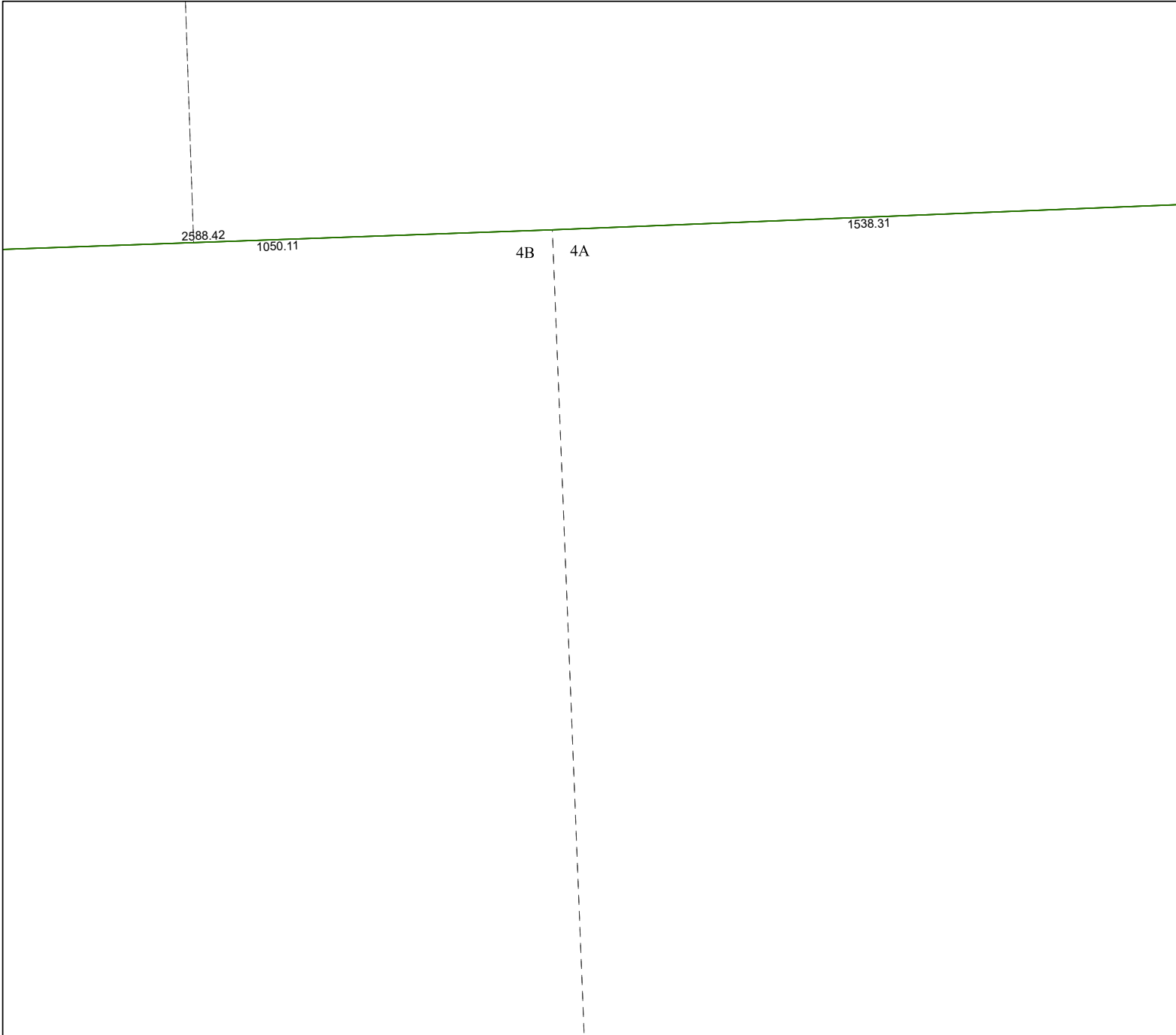


4461B6

4461B9



4461D2

# Harris Central Appraisal District



0 45 90 180 Feet

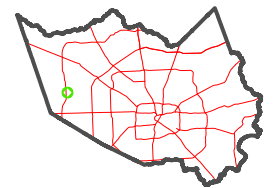
PUBLICATION DATE:  
1/23/2024

Geospatial or map data maintained by the Harris Central Appraisal District is for informational purposes and may **not** have been prepared for or be suitable for legal, engineering, or surveying purposes. It does **not** represent an on-the-ground survey and only represents the approximate location of property boundaries.



4461B11

### MAP LOCATION



## FACET 4461B10

8	5	6	7	8
12	9	10	11	12
4	1	2	3	4