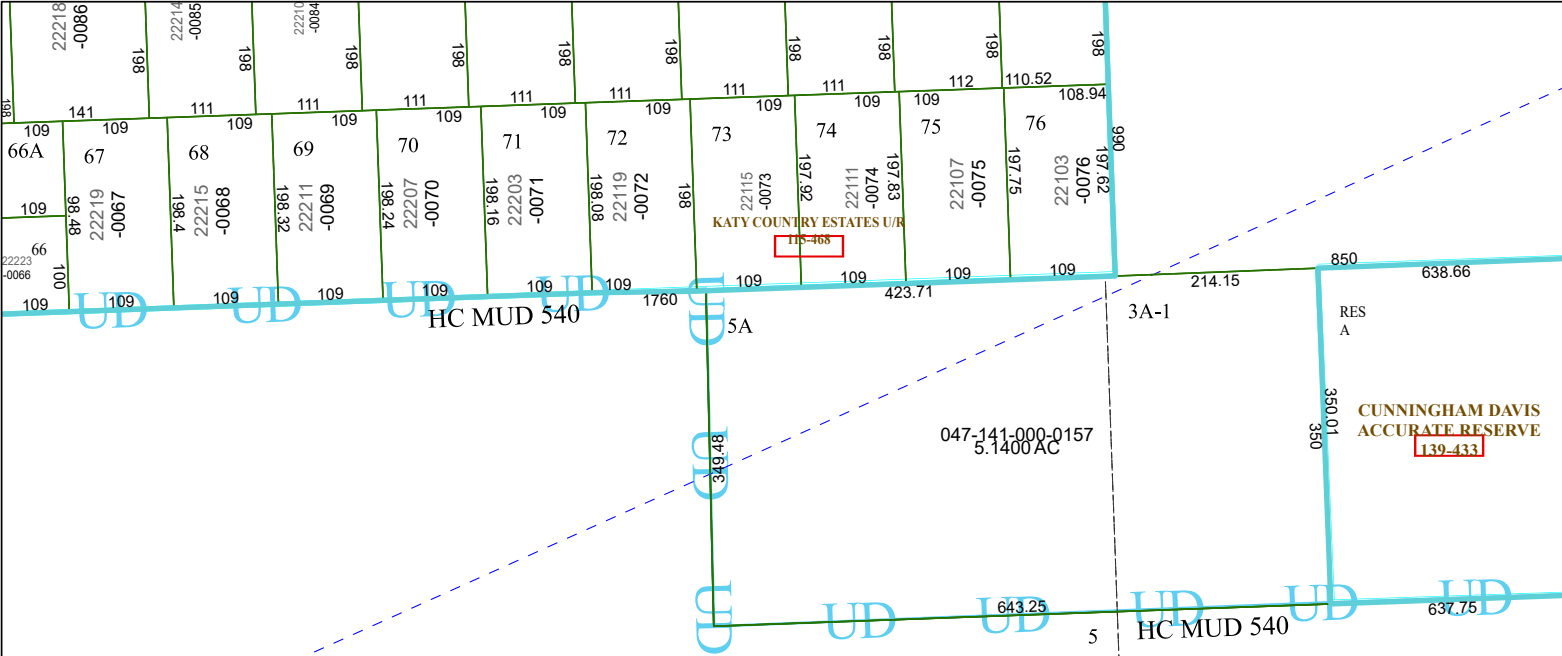


4461C8



# Harris Central Appraisal District

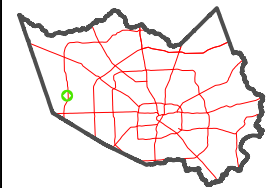


0 45 90 180  
Feet

PUBLICATION DATE:  
1/5/2023

Geospatial or map data maintained by the Harris Central Appraisal District is for informational purposes and may not have been prepared for or be suitable for legal, engineering, or surveying purposes. It does not represent an on-the-ground survey and only represents the approximate location of property boundaries.

**MAP LOCATION**



## FACET

### 4461C12

6	7	8	5	6
10	11	12	9	10
2	3	4	1	2

4460A4

4461C11

22002  
047-141-000-0050  
1.0000 AC  
047-141-000-0151  
148.7200 AC