

Harris Central Appraisal District



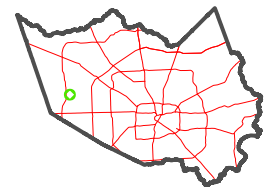
0 45 90 180 Feet

PUBLICATION DATE:
1/5/2023

Geospatial or map data maintained by the Harris Central Appraisal District is for informational purposes and may not have been prepared for or be suitable for legal, engineering, or surveying purposes. It does not represent an on-the-ground survey and only represents the approximate location of property boundaries.



MAP LOCATION

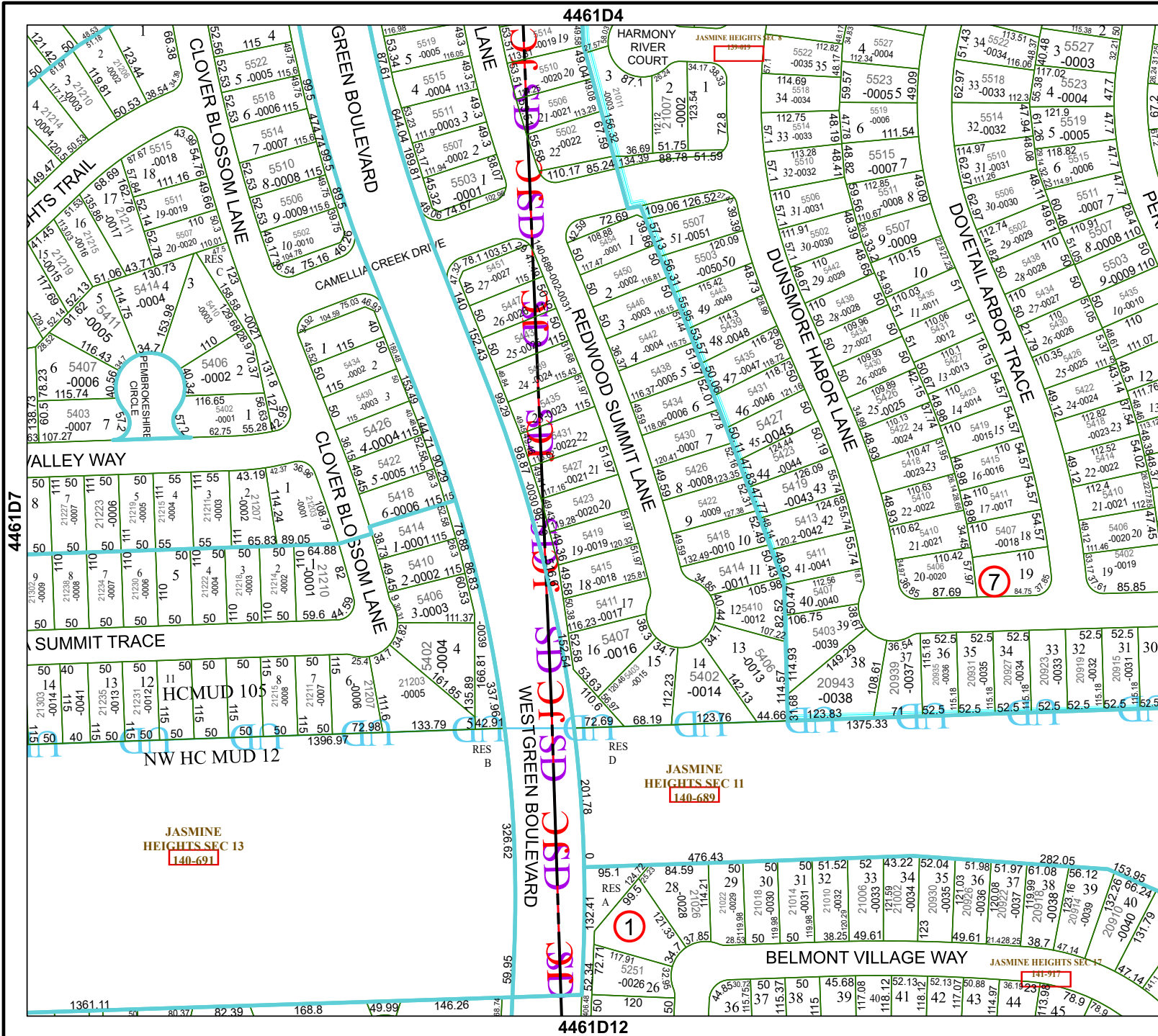


FACET 4461D8

2	3	4	5	6
6	7	8	9	10

4461D4

4461D12



4461D7

4561C5

JASMINE HEIGHTS SEC 13
140-691

JASMINE HEIGHTS SEC 11
140-689

JASMINE HEIGHTS SEC 11
141-917