

4466B10

4466D6

4466D1

Harris Central Appraisal District

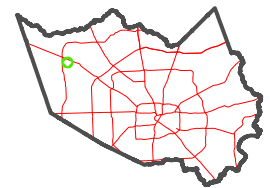


0 45 90 180 Feet

PUBLICATION DATE: 1/29/2024

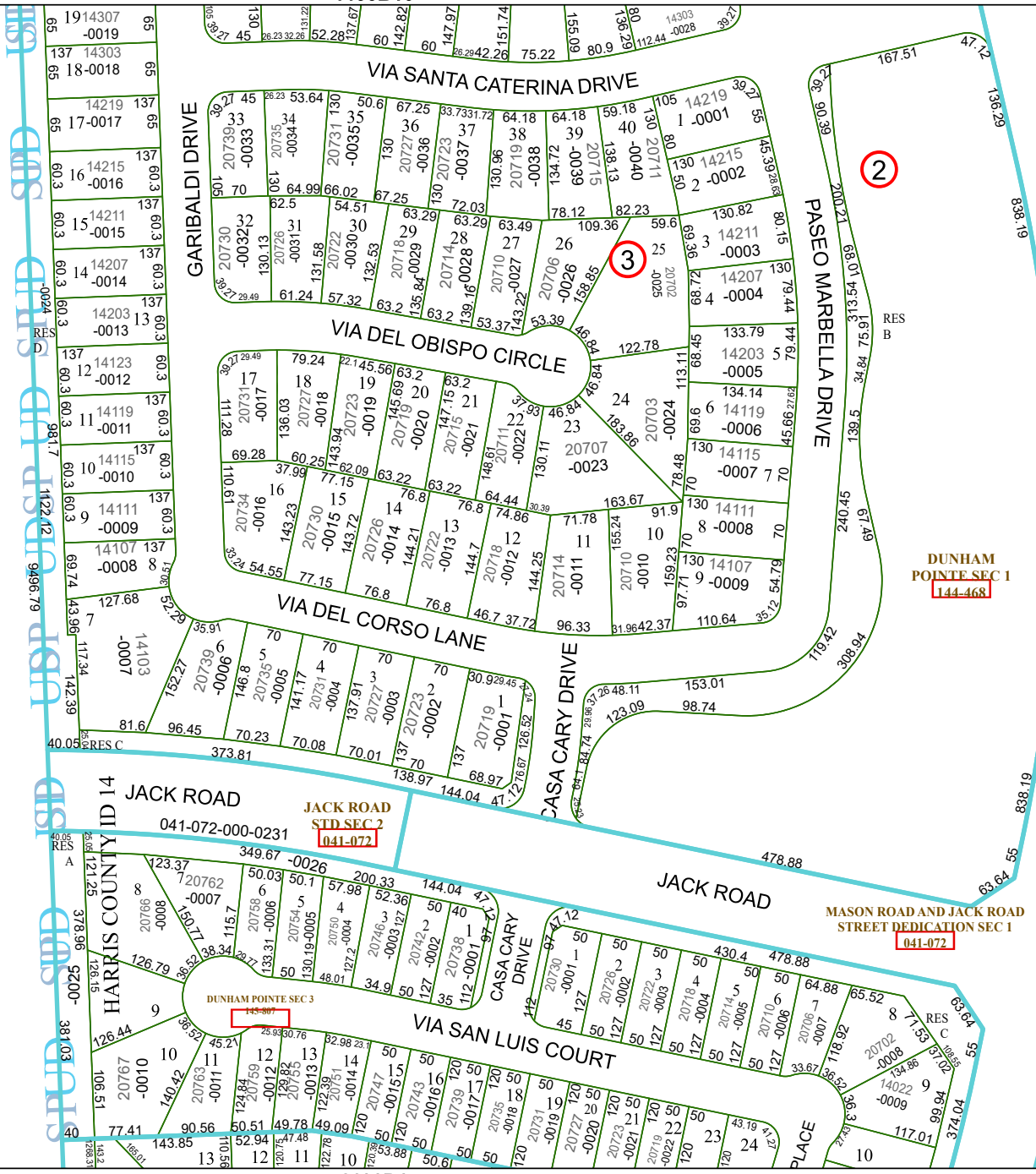
Geospatial or map data maintained by the Harris Central Appraisal District is for informational purposes and may not have been prepared for or be suitable for legal, engineering, or surveying purposes. It does not represent an on-the-ground survey and only represents the approximate location of property boundaries.

MAP LOCATION



FACET 4466D2

12	9	10	11	12
4	1	2	3	4
8	5	6	7	8



DUNHAM POINTE SEC 1
144-468

JACK ROAD
STD SEC 2
041-072

MASON ROAD AND JACK ROAD
STREET DEDICATION SEC 1
041-072

DUNHAM POINTE SEC 3
143-897