

4467C8

Harris Central Appraisal District



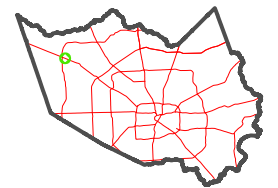
0 45 90 180 Feet

PUBLICATION DATE:
12/30/2023

Geospatial or map data maintained by the Harris Central Appraisal District is for informational purposes and may **not** have been prepared for or be suitable for legal, engineering, or surveying purposes. It does **not** represent an on-the-ground survey and only represents the approximate location of property boundaries.



MAP LOCATION



FACET

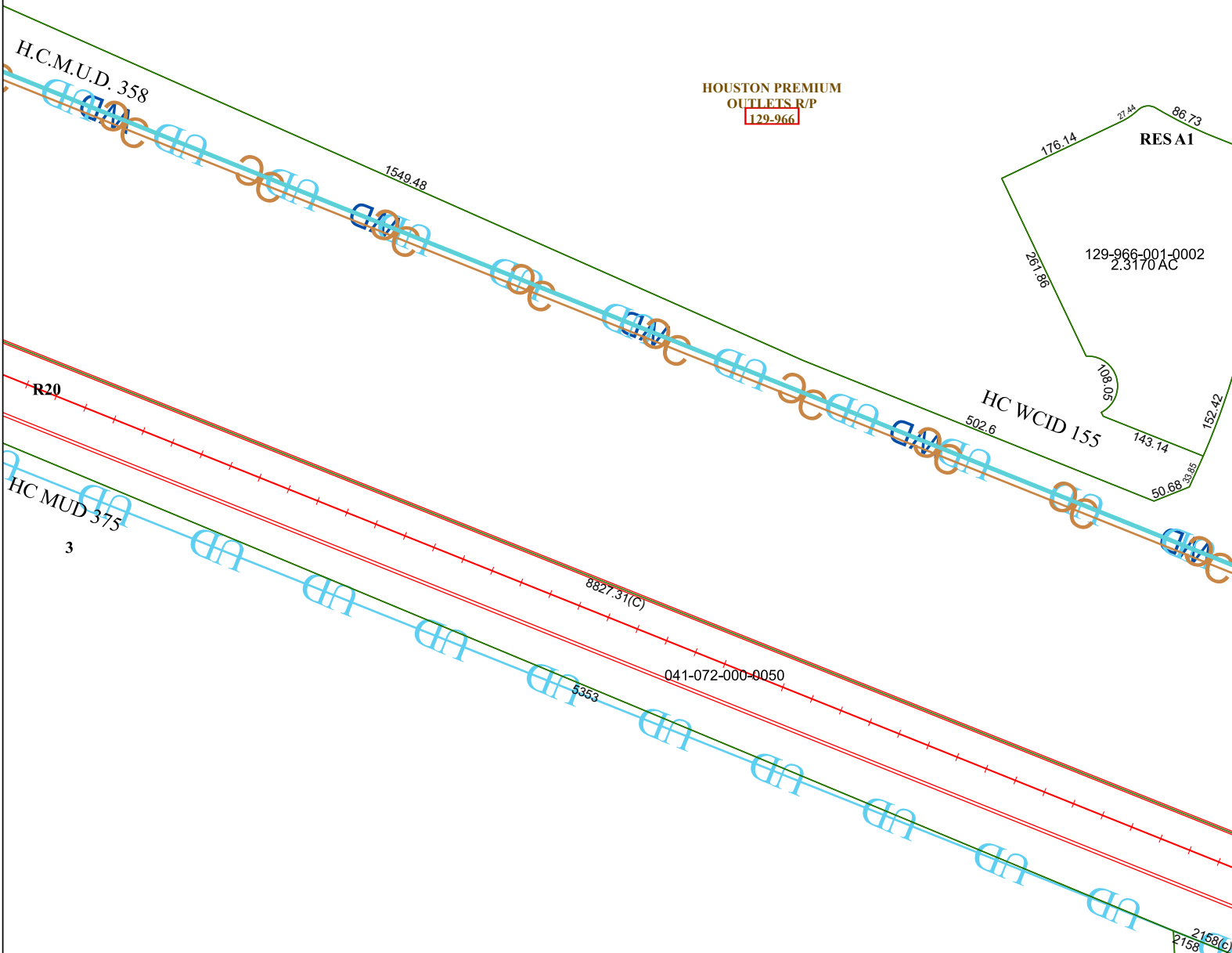
4467C12

6	7	8	5	6
10	11	12	9	10
2	3	4	1	2

HOUSTON PREMIUM
OUTLETS R/P
129-966



HC WCID 155
502.6



4466A4

4467C11

4467D9