

4469C12

4468A3

Harris Central Appraisal District



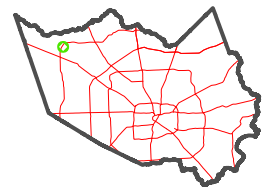
0 45 90 180 Feet

PUBLICATION DATE:
5/6/2024

Geospatial or map data maintained by the Harris Central Appraisal District is for informational purposes and may **not** have been prepared for or be suitable for legal, engineering, or surveying purposes. It does **not** represent an on-the-ground survey and only represents the approximate location of property boundaries.



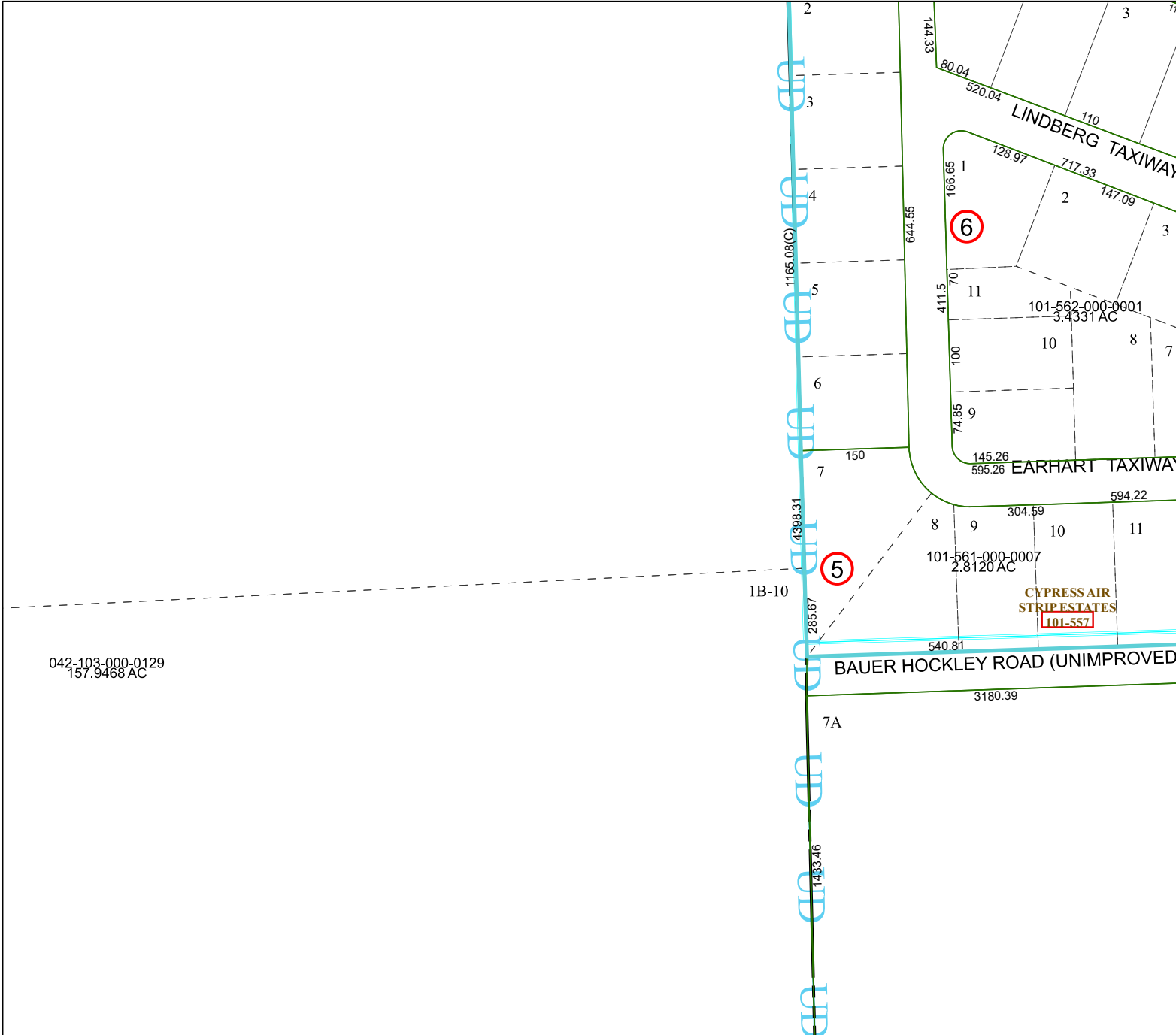
MAP LOCATION



FACET

4468A4

10	11	12	9	10
2	3	4	1	2
6	7	8	5	6



4468A8