

# Harris Central Appraisal District

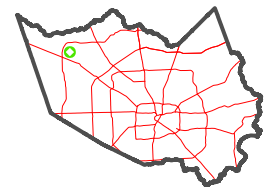


0 45 90 180 Feet

PUBLICATION DATE: 1/5/2023

Geospatial or map data maintained by the Harris Central Appraisal District is for informational purposes and may not have been prepared for or be suitable for legal, engineering, or surveying purposes. It does not represent an on-the-ground survey and only represents the approximate location of property boundaries.

MAP LOCATION

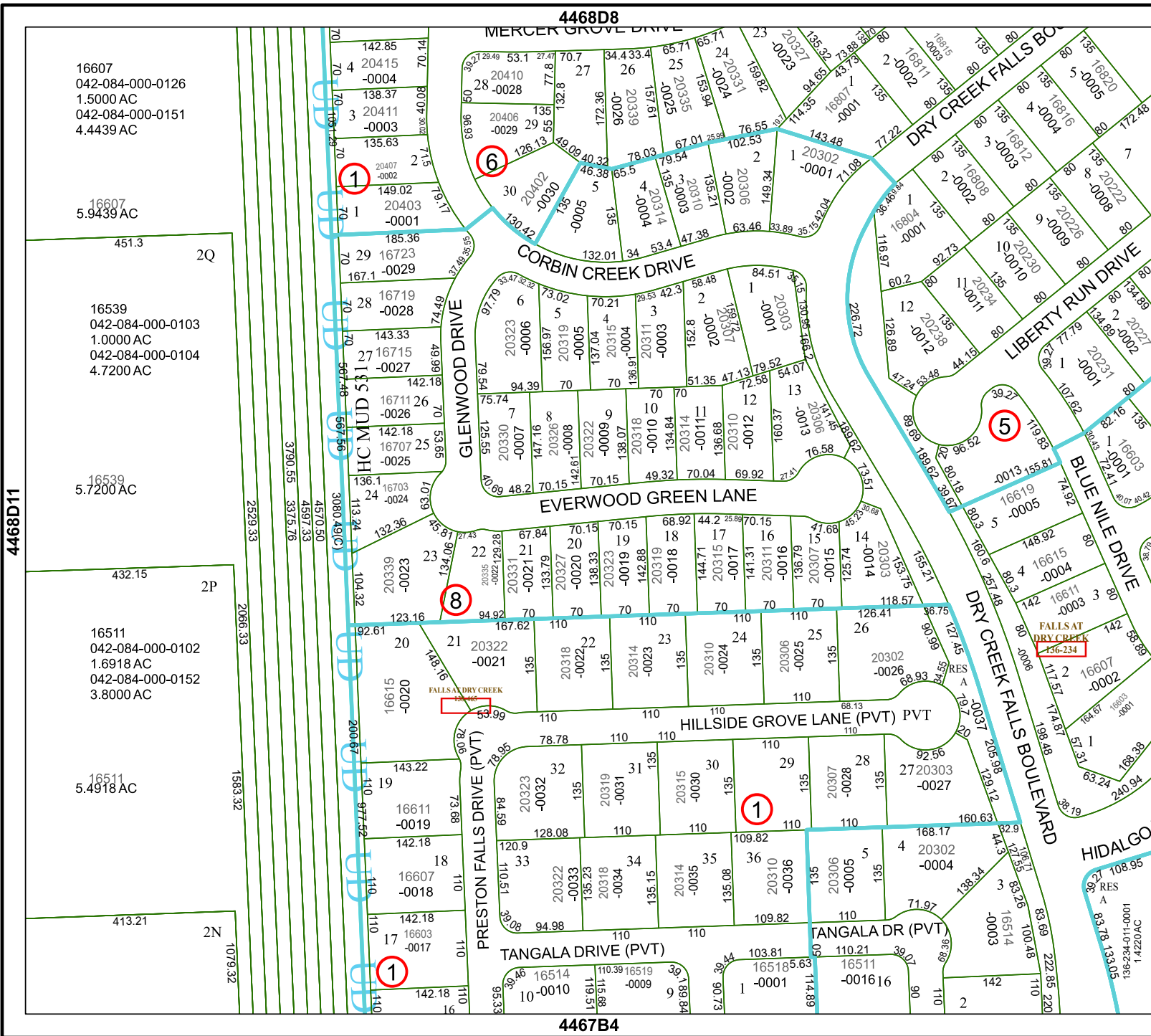


## FACET 4468D12

6	7	8	5	6
10	11	12	9	10
2	3	4	1	2

4468D8

4467B4



16607  
042-084-000-0126  
1.5000 AC  
042-084-000-0151  
4.4439 AC

16607  
5.9439 AC

16539  
042-084-000-0103  
1.0000 AC  
042-084-000-0104  
4.7200 AC

16539  
5.7200 AC

16511  
042-084-000-0102  
1.6918 AC  
042-084-000-0152  
3.8000 AC

16511  
5.4918 AC

4468D11

4568C9