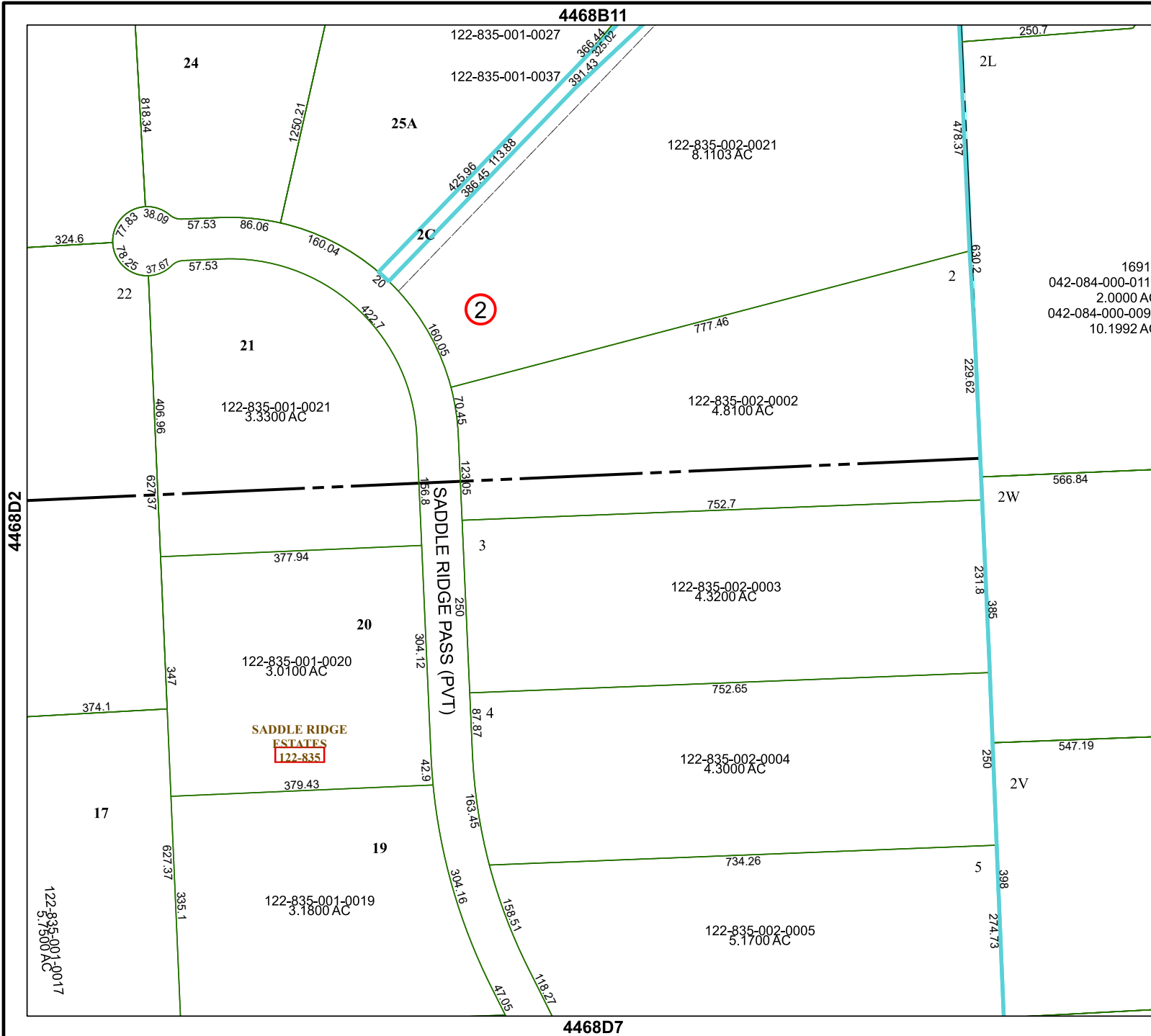


4468B11



Harris Central Appraisal District



16915
042-084-000-0114
2.0000 AC
042-084-000-0099
10.1992 AC

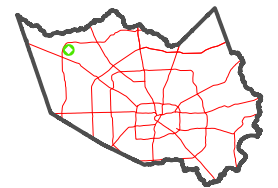
0 45 90 180 Feet

PUBLICATION DATE:
1/5/2023

Geospatial or map data maintained by the Harris Central Appraisal District is for informational purposes and may **not** have been prepared for or be suitable for legal, engineering, or surveying purposes. It does **not** represent an on-the-ground survey and only represents the approximate location of property boundaries.



MAP LOCATION



FACET 4468D3

9	10	11	12	9
1	2	3	4	1
5	6	7	8	5

4468D7

4468D2

4468D4