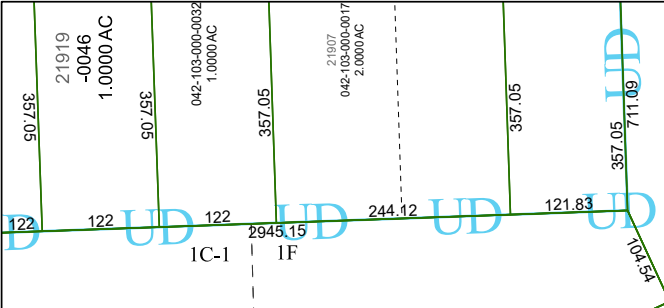


4469C7



042-103-000-0123
63.8457 AC

4468A3

Harris Central Appraisal District

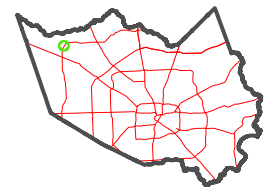


0 45 90 180 Feet

PUBLICATION DATE:
3/11/2024

Geospatial or map data maintained by the Harris Central Appraisal District is for informational purposes and may **not** have been prepared for or be suitable for legal, engineering, or surveying purposes. It does **not** represent an on-the-ground survey and only represents the approximate location of property boundaries.

MAP LOCATION



FACET

4469C11

5	6	7	8	5
9	10	11	12	9
1	2	3	4	1

4469C10

4469C12

