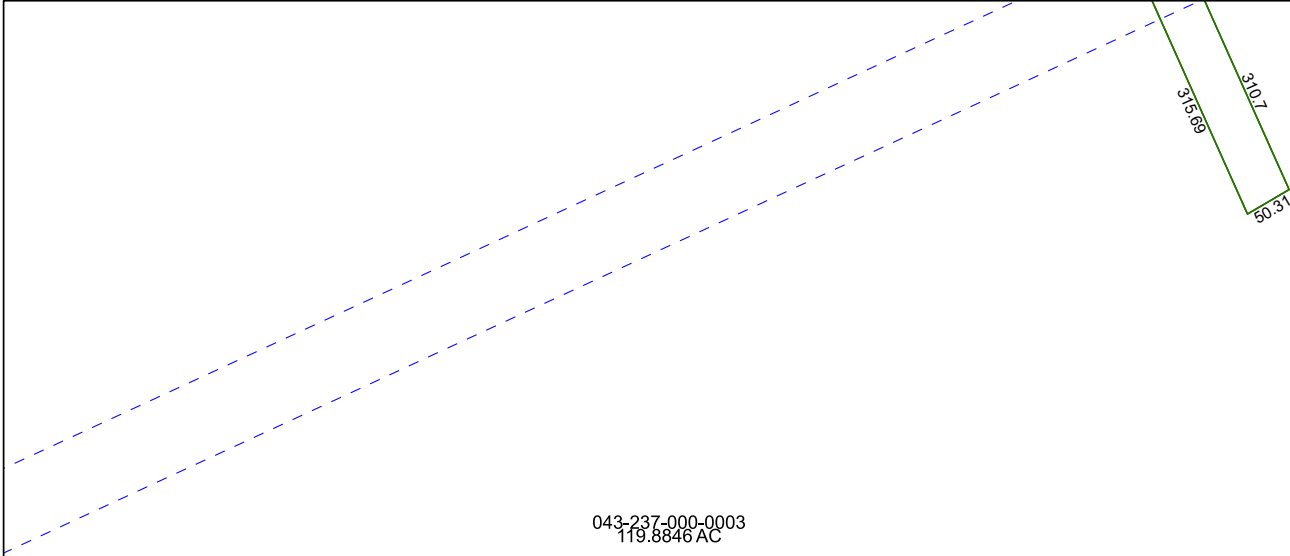


4469B11



4469D2

Harris Central Appraisal District



0 45 90 180
Feet

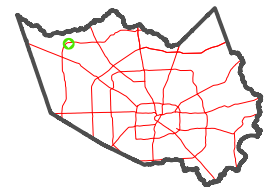
PUBLICATION DATE:
12/30/2023

Geospatial or map data maintained by the Harris Central Appraisal District is for informational purposes and may **not** have been prepared for or be suitable for legal, engineering, or surveying purposes. It does **not** represent an on-the-ground survey and only represents the approximate location of property boundaries.



4469D4

MAP LOCATION



FACET

4469D3

9	10	11	12	9
1	2	3	4	1
5	6	7	8	5

4469D7