

4470A10

12H

CST CORNER STORE
NO 1916 AMEND
137-795

13E

Harris Central Appraisal District



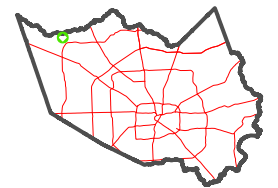
0 45 90 180
Feet

PUBLICATION DATE:
2/13/2024

Geospatial or map data maintained by the Harris Central Appraisal District is for informational purposes and may not have been prepared for or be suitable for legal, engineering, or surveying purposes. It does not represent an on-the-ground survey and only represents the approximate location of property boundaries.



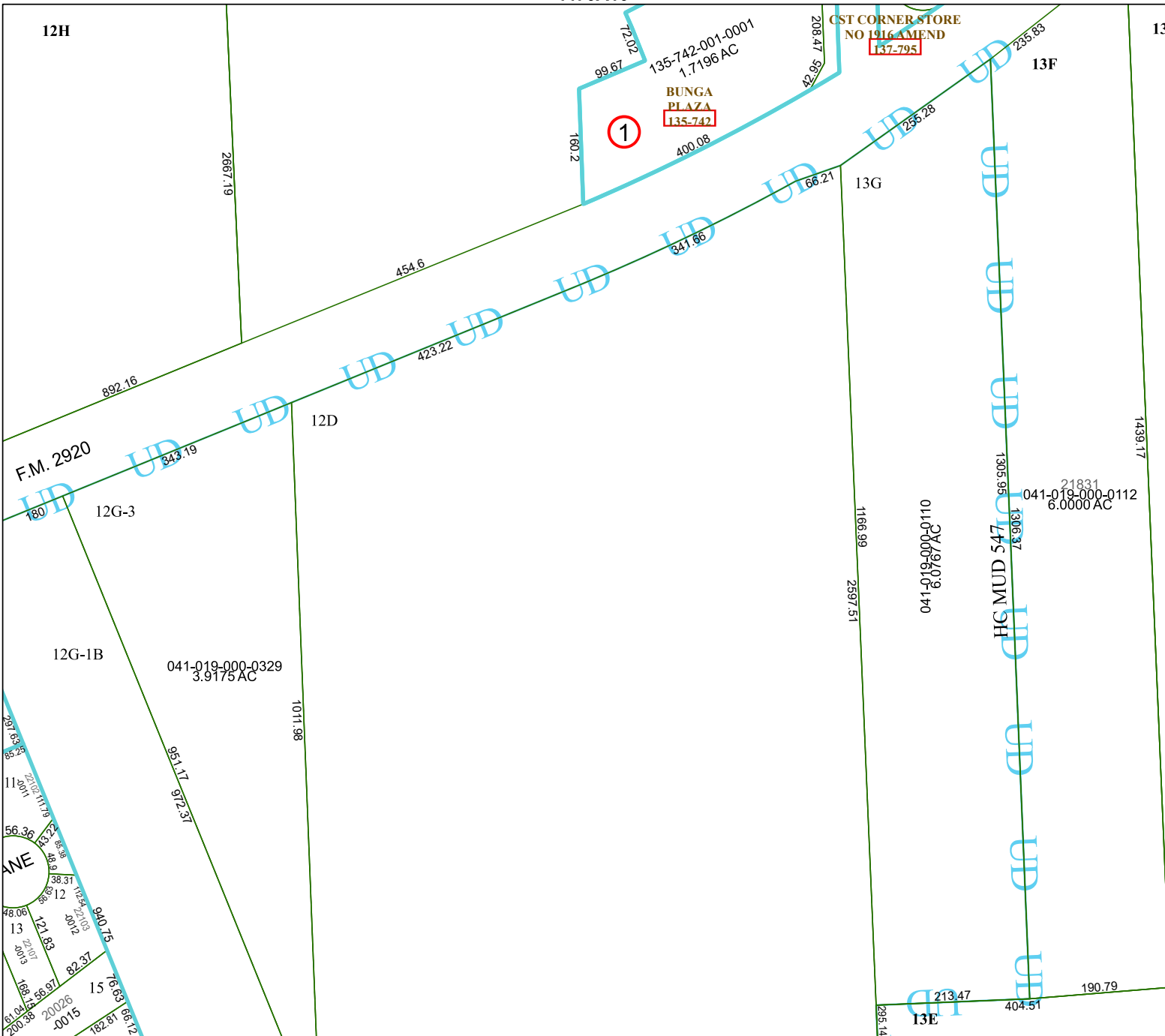
MAP LOCATION



FACET 4470C2

12	9	10	11	12
4	1	2	3	4
8	5	6	7	8

4470C6



4470C1

4470C3

F.M. 2920

ANE

13

15

20026-0015

12G-3

12G-1B

15

20026-0015

041-019-000-0329
3.9175 AC

15

20026-0015

12D

1011.98

15

20026-0015

454.6

423.22

951.17

15

20026-0015

892.16

423.22

951.17

15

20026-0015

160.2

454.6

423.22

951.17

15

20026-0015

1

454.6

423.22

951.17

15

20026-0015

341.66

423.22

951.17

15

20026-0015

66.21

454.6

423.22

951.17

15

20026-0015

1166.99

2597.51

15

20026-0015

041-019-000-0110
6.0767 AC

15

20026-0015

HC MUD 547

1306.73

15

20026-0015

1305.95

1306.73

15

20026-0015

21831
041-019-000-0112
6.0000 AC

1306.73

15

20026-0015

1439.17

1439.17

15

20026-0015

1439.17

1439.17

15

20026-0015

1439.17

1439.17

15

20026-0015

1439.17

1439.17

15

20026-0015

1439.17

1439.17

15

20026-0015

1439.17

1439.17

15

20026-0015

1439.17

1439.17

15

20026-0015

1439.17

1439.17

15

20026-0015

1439.17

1439.17

15

20026-0015

1439.17

1439.17

15

20026-0015

1439.17

1439.17

15

20026-0015

1439.17

1439.17

15

20026-0015

1439.17

1439.17

15

20026-0015

1439.17

1439.17

15

20026-0015

1439.17

1439.17

15

20026-0015

1439.17

1439.17

15

20026-0015

1439.17

1439.17

15

20026-0015

1439.17

1439.17

15

20026-0015

1439.17

1439.17

15

20026-0015

2667.19

843.19

951.17

15

20026-0015

2667.19

843.19

951.17

15

20026-0015

2667.19

843.19

951.17

15

20026-0015

2667.19

843.19

951.17

15

20026-0015

2667.19

843.19

951.17

15

20026-0015

2667.19

843.19

951.17

15

20026-0015

2667.19

843.19

951.17

15

20026-0015

2667.19

843.19

951.17

15

20026-0015

2667.19

843.19

951.17

15

20026-0015

2667.19

843.19

951.17

15

20026-0015

2667.19

843.19

951.17

15

20026-0015

2667.19

843.19

951.17

15

20026-0015

2667.19

843.19

951.17

15

20026-0015

2667.19

843.19

951.17

15

20026-0015

2667.19

843.19

951.17

15

20026-0015

2667.19

843.19

951.17

15

20026-0015

2667.19

843.19

951.17

15

20026-0015

2667.19

843.19

951.17

15

20026-0015

2667.19

843.19

951.17

15

20026-0015

2667.19

843.19

951.17

15

20026-0015

2667.19

843.19

951.17

15

20026-0015

2667.19

843.19

951.17

15

20026-0015

2667.19

843.19