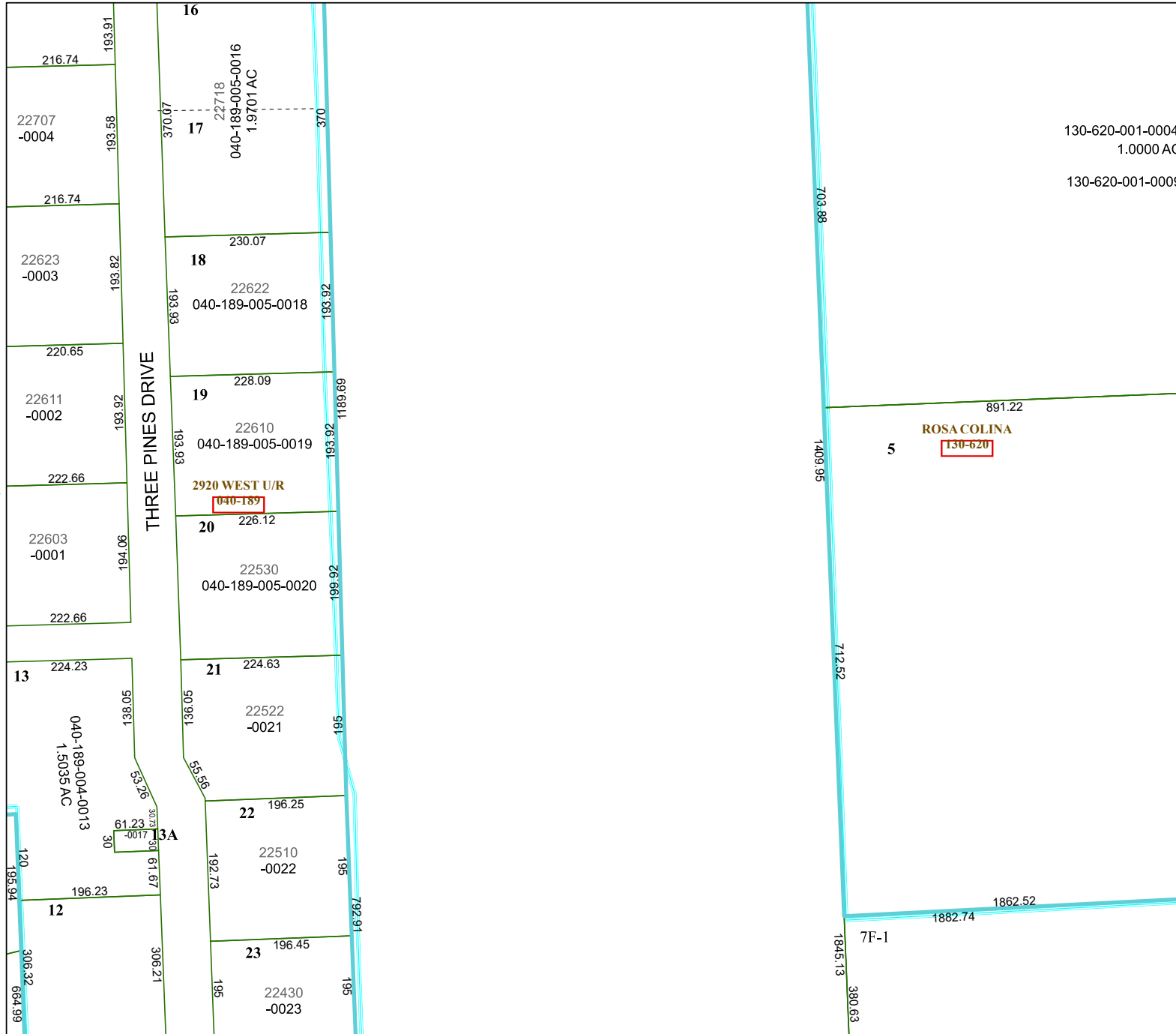


4471D6

4471D9



130-620-001-0004
1.0000 AC
130-620-001-0009

4470B2

Harris Central Appraisal District



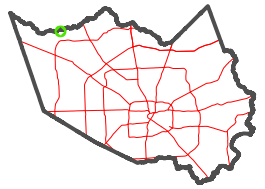
0 45 90 180 Feet

PUBLICATION DATE:
1/23/2024

Geospatial or map data maintained by the Harris Central Appraisal District is for informational purposes and may **not** have been prepared for or be suitable for legal, engineering, or surveying purposes. It does **not** represent an on-the-ground survey and only represents the approximate location of property boundaries.



MAP LOCATION



FACET 4471D10

8	5	6	7	8
12	9	10	11	12
4	1	2	3	4

4471D11